



Mortality Statistics Newfoundland and Labrador 2005-2009

Prepared by: Research and Evaluation Department

Date: November 2010



Copyright Notice

**This document is fully copyright protected by the
Newfoundland and Labrador Centre for Health Information**

Introduction

The Newfoundland and Labrador Centre for Health Information was established by the Government of Newfoundland and Labrador to provide quality information to health professionals, the public, and health system decision-makers. Through collaboration with the health system, the Centre supports the development of standards and maintains key health databases, prepares and distributes health reports, and supports and carries out applied health research and evaluation. The Centre's mandate also includes the development of the provincial Electronic Health Record.

This report presents information relating to resident deaths occurring in the province of Newfoundland and Labrador for years 2005 to 2009. Where possible, information is also presented for the province's four Regional Health Authorities. Statistics for 2005 and 2006 were derived from Statistics Canada's Annual Mortality Files. Statistics for 2007 to 2009 are preliminary and were derived from the NLCHI Mortality System.

If you would like more information about this report or any other report published by the Centre, visit our web site at www.nlchi.nl.ca/research_reports.asp or contact:

Centre for Health Information
70 O'Leary Avenue
St. John's, NL, A1B 2C7
(709) 752-6001
E-mail: submit@nlchi.nl.ca

Highlights

- The age-standardized mortality rate for Newfoundland and Labrador decreased by 10.2% from 699.6 per 100,000 population in 2005 to 628.3 per 100,000 population in 2009.
- From 2005 to 2006, Newfoundland and Labrador had more potential years of life lost due to cancer than both circulatory and respiratory diseases combined.
- The infant mortality rate in Newfoundland and Labrador and each Regional Health Authority varied from 2005 to 2009. This variation is a reflection of the low number of infant deaths in our province annually. In 2006, the infant mortality rate was 5.5 per 1,000 live births; the national rate was 5.0 per 1,000 live births.
- The rate of natural increase for the province has increased each year from 2005 to 2009. Prior to 2005, there was a declining rate of natural increase. The rate of natural increase is the number of births minus the number of deaths per 100,000 population in a given year.
- In 2006, diseases of the circulatory system and cancer were the two leading causes of death for the province and all Regional Health Authorities.
- In 2006, life expectancy at birth in Newfoundland and Labrador was 78.2 years, slightly lower than that for Canada at 80.8 years.

Table of Contents

Introduction	1
Highlights	2
Technical Notes	4
Section 1 Mortality Statistics, Province and Regional Health Authorities (RHAs), 2005-2009	7
Number of Deaths, 2005-2009	8
Crude Mortality Rates, 2005-2009	8
Age-Standardized Mortality Rates, 2005-2009	9
Number of Deaths and Age-Specific Mortality Rates, 2005-2009	10
Potential Years of Life Lost (PYLL) – Number and Rate, 2005-2009	14
Potential Years of Life Lost (PYLL) – Number and Rate, Top Three Causes of Death, 2005-2006	15
Number of Infant Deaths and Infant Mortality Rate, 2005-2009	16
Rate of Natural Increase, 2005-2009	17
Section 2 Causes of Death	19
Causes of Death by Disease Chapter, Province, 2006	20
Causes of Death by Disease Chapter, Eastern, 2006	20
Causes of Death by Disease Chapter, Central, 2006	21
Causes of Death by Disease Chapter, Western, 2006	21
Causes of Death by Disease Chapter, Labrador-Grenfell, 2006	22
Section 3 Life Expectancy	23
Life Expectancy at Birth, 2006	24
Life Expectancy at Age 65, 2006	24
Total Life Expectancy at Birth and at Age 65, Canada and Provinces, 2006	25
Male Life Expectancy at Birth and at Age 65, Canada and Provinces, 2006	25
Female Life Expectancy at Birth and at Age 65, Canada and Provinces, 2006	25
Glossary	26

Technical Notes

1. In comparison to previous mortality reports released by the Centre, the following changes have been made to the present report:

- Health-Adjusted Life Expectancy (HALE)

HALE has been excluded from this report as updated estimates from Statistics Canada are unavailable. HALE is an indicator of overall population health and is not only a measure of quantity of life but a measure of quality of life as well.

- Population Estimates

Rates were calculated using population estimates prepared by Statistics Canada. In previous reports rates were calculated using population projections (medium scenario) developed by the Economics and Statistics Branch, Department of Finance, Government of Newfoundland and Labrador.

2. Statistics for 2005 and 2006 were derived from Statistics Canada's Annual Mortality data files. These files contain information on both resident and non-resident deaths that occur in Newfoundland and Labrador as well as information on the underlying cause of death.

Statistics for 2007 to 2009 were derived from the NLCHI Mortality System, maintained by the Centre for Health Information (the Centre). Mortality data is collected from provincial death notifications provided to the Centre by the provincial Department of Government Services, Vital Statistics Division. It includes both resident and non-resident deaths occurring within the province. The NLCHI Mortality System contains information on a variety of conditions and/or diseases present at death, however, there is no indication of which of these leads directly to death (i.e. the "Underlying Cause of Death"). For the purposes of this report, information derived from the NLCHI Mortality System is considered preliminary.

3. In situations where place of residence or date of birth of the deceased were unknown in the Statistics Canada's Annual Mortality data file, data were sought through the NLCHI Mortality System and confirmed using provincial death notifications.
4. Different populations, such as provinces or health authorities, are composed of different age groups and comparing rates for these populations can introduce bias. Age-standardization controls for the impact of age on mortality rates. In this report, the direct method of age-standardization was used whereby age-specific rates were calculated and applied to a standard population (1991 Canadian Census population).
5. Causes of death (Section 2) are categorized according to ICD-10-CA chapter. ICD-10 is an international standard used to classify diseases and conditions that

are recorded on death certificates and health records. There are 23 chapters with alpha-numeric categories and sub-categories. ICD-10-CA is a Canadian enhanced version of ICD-10.

6. Mortality rates and potential years of life lost (PYLL) for the top three causes of death were obtained from Statistics Canada and presented for 2005 and 2006, the latest years for which data were available from Statistics Canada at the time of publication.
7. Estimates of life expectancy are presented for the year 2006 as this is the latest year for which these estimates were available from Statistics Canada.
8. The Labrador-Grenfell and Western Regional Health Authorities have populations less than 100,000. Therefore, mortality rates for these areas may have a high degree of variability and should be interpreted with caution.

Section 1

Mortality Statistics Province and Regional Health Authorities (RHAs) 2005-2009

Table 1 Number of Deaths by Sex, Province¹ and Regional Health Authorities, 2005-2009

Year	Sex	Province	Eastern	Central	Western	Lab-Grenfell
2005	Male	2369	1304	497	430	138
	Female	2085	1278	398	324	85
	Total	4454	2582	895	754	223
2006	Male	2323	1253	508	410	151
	Female	2130	1260	457	310	103
	Total	4453	2513	965	720	254
2007 ²	Male	2298	1265	505	406	117
	Female	2159	1253	433	354	113
	Total	4457	2518	938	760	230
2008 ²	Male	2291	1294	496	388	111
	Female	2196	1300	434	369	93
	Total	4487	2594	930	757	204
2009 ²	Male	2291	1286	512	369	124
	Female	2057	1237	393	327	100
	Total	4349	2524	905	696	224

Sources: Statistics Canada Annual Mortality Data Files, 2005-2006; NLCHI Mortality System, 2007-2009

Table 2 Crude Mortality Rates³ by Sex, Province¹ and Regional Health Authorities, 2005-2009

Year	Sex	Province	Eastern	Central	Western	Lab-Grenfell
2005	Male	934.7	891.7	1023.1	1098.3	708.6
	Female	794.2	834.8	804.6	794.1	443.4
	Total	863.2	862.6	912.9	943.1	577.0
2006	Male	929.2	866.5	1070.4	1062.1	781.3
	Female	819.4	829.9	938.3	769.2	539.2
	Total	873.2	847.7	1003.5	912.5	660.9
2007 ²	Male	927.4	877.0	1087.2	1065.3	615.8
	Female	835.3	826.2	900.7	888.8	597.2
	Total	880.4	851.0	992.4	975.1	606.5
2008 ²	Male	919.8	888.0	1071.9	1012.3	591.8
	Female	848.5	851.8	909.7	917.4	509.5
	Total	883.5	869.4	989.6	963.7	551.2
2009 ²	Male	917.9	874.7	1114.4	969.8	667.9
	Female	793.2	804.2	825.4	824.7	547.6
	Total	854.5	839.0	967.3	895.7	608.3

Sources: Statistics Canada Annual Mortality Data Files, 2005-2006; NLCHI Mortality System, 2007-2009; Statistics Canada Population Estimates, 2005-2009

¹ Includes deaths where place of residence within province is unknown.

² Based on preliminary data (see Technical Notes).

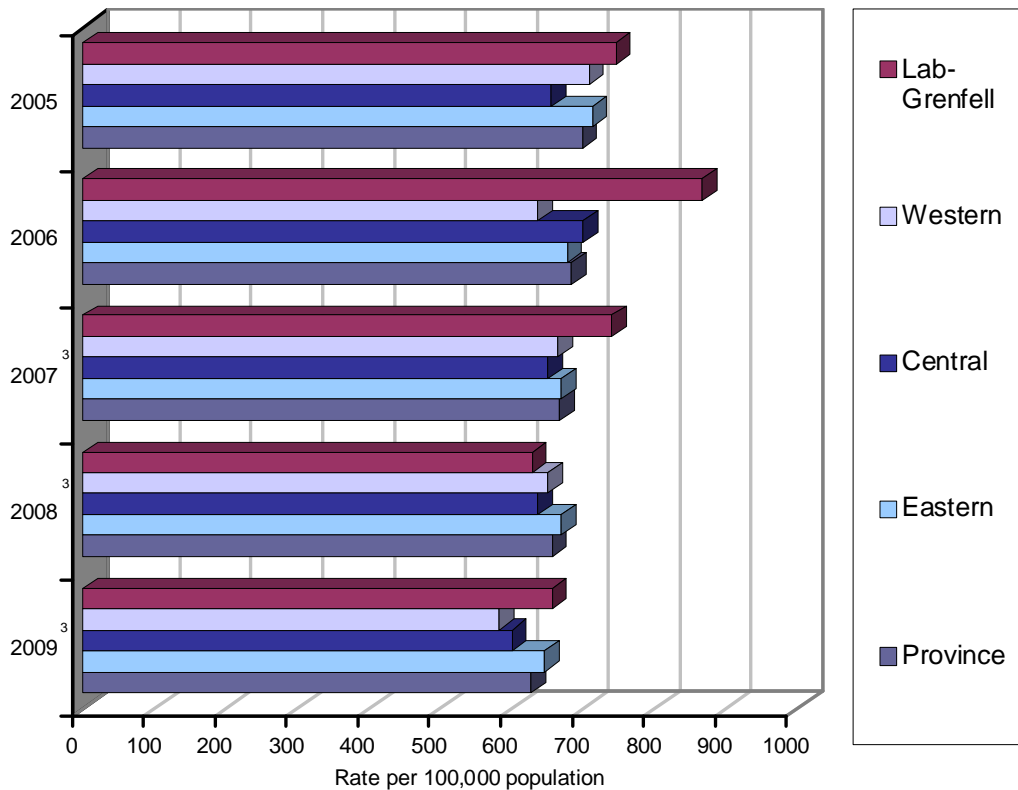
³ Per 100,000 population.

Table 3 Age-Standardized Mortality Rates¹, Province² and Regional Health Authorities, 2005-2009

Year	Province	Eastern	Central	Western	Lab-Grenfell
2005	699.6	712.9	656.4	708.6	746.3
2006	683.8	678.5	700.3	637.4	867.7
2007 ³	668.3	669.6	651.9	665.2	740.6
2008 ³	657.3	670.1	637.9	650.8	629.1
2009 ³	628.3	646.0	601.1	582.4	656.9

Sources: Statistics Canada Annual Mortality Data Files, 2005-2006; NLCHI Mortality System, 2007-2009; Statistics Canada Population Estimates, 2005-2009

Figure 1 Age-Standardized Mortality Rates¹, Province² and Regional Health Authorities, 2005-2009



Sources: Statistics Canada Annual Mortality Data Files, 2005-2006; NLCHI Mortality System, 2007-2009; Statistics Canada Population Estimates, 2005-2009

¹ Per 100,000 population.

² Includes deaths where place of residence within province is unknown.

³ Based on preliminary data (see Technical Notes).

**Table 4 Number of Deaths by Age Group and Age-Specific Mortality Rates¹,
Province² and Regional Health Authorities, 2005-2009**

Year	Age	Total		Eastern Male		Female	
		No.	Rate	No.	Rate	No.	Rate
2005	<1	12	445.4	--	--	--	--
	1-4	--	--	--	--	--	--
	5-14	--	--	--	--	--	--
	15-24	11	26.4	--	--	--	--
	25-44	98	111.0	61	141.3	37	82.0
	45-64	470	549.3	276	654.6	194	446.9
	65-74	462	2266.9	289	2988.6	173	1615.3
	75+	1520	9074.1	662	10739.8	858	8104.3
2006	<1	19	699.0	12	857.1	7	531.1
	1-4	--	--	--	--	--	--
	5-14	--	--	--	--	--	--
	15-24	22	55.6	13	64.9	9	46.1
	25-44	68	79.0	43	102.6	25	56.5
	45-64	486	556.6	310	722.4	176	396.5
	65-74	451	2158.2	262	2631.8	189	1727.3
	75+	1458	8532.3	611	9566.3	847	7915.1
2007 ³	<1	20	754.4	9	658.4	11	856.7
	1-4	0	0.0	--	--	--	--
	5-14	9	28.9	--	--	--	--
	15-24	21	55.3	13	67.5	8	42.7
	25-44	59	69.4	37	89.7	22	50.3
	45-64	450	503.7	275	627.2	175	384.7
	65-74	454	2110.5	267	2592.0	187	1668.2
	75+	1505	8752.5	656	10205.4	849	7885.2
2008 ³	<1	14	528.7	7	501.1	7	559.6
	1-4	--	--	--	--	--	--
	5-14	--	--	--	--	--	--
	15-24	15	38.2	--	--	--	--
	25-44	73	87.8	38	93.7	35	82.2
	45-64	453	498.3	297	667.0	156	336.3
	65-74	469	2051.8	284	2579.2	185	1561.6
	75+	1559	8922.3	651	9779.2	908	8395.0
2009 ³	<1	18	655.7	12	835.1	6	458.7
	1-4	--	--	--	--	--	--
	5-14	--	--	--	--	--	--
	15-24	15	38.6	9	45.9	6	31.2
	25-44	89	107.2	57	140.6	32	75.4
	45-64	458	494.7	287	634.2	171	361.4
	65-74	485	2026.1	283	2437.1	202	1638.8
	75+	1451	8266.4	633	9391.7	818	7565.0

Sources: Statistics Canada Annual Mortality Data Files, 2005-2006; NLCHI Mortality System, 2007-2009;
Statistics Canada Population Estimates, 2005-2009

¹ Per 100,000 population in respective age group.

² Includes deaths where place of residence within province is unknown.

³ Based on preliminary data (see Technical Notes).

-- Data suppressed due to privacy policies

Table 4 Number of Deaths by Age Group and Age-Specific Mortality Rates¹, Province² and Regional Health Authorities, 2005-2009 (cont'd)

Year	Age	Total		Central Male		Female	
		No.	Rate	No.	Rate	No.	Rate
2005	<1	--	--	--	--	--	--
	1-4	--	--	--	--	--	--
	5-14	0	0.0	0	0.0	0	0.0
	15-24	11	88.5	6	96.5	5	80.5
	25-44	24	94.0	19	150.0	5	38.8
	45-64	135	450.6	89	599.2	46	304.5
	65-74	186	2118.9	119	2674.2	67	1548.1
	75+	537	8119.1	263	9160.6	274	7320.3
2006	<1	--	--	--	--	--	--
	1-4	0	0.0	0	0.0	0	0.0
	5-14	--	--	--	--	0	0.0
	15-24	5	42.0	--	--	--	--
	25-44	36	148.9	25	211.3	11	89.1
	45-64	159	521.9	93	614.0	66	430.9
	65-74	180	2037.6	116	2603.2	64	1461.9
	75+	582	8706.1	270	9440.6	312	8156.9
2007 ³	<1	--	--	--	--	--	--
	1-4	--	--	0	0.0	--	--
	5-14	0	0.0	0	0.0	0	0.0
	15-24	6	53.6	--	--	--	--
	25-44	19	82.6	8	71.7	11	92.8
	45-64	161	523.2	96	628.5	65	419.4
	65-74	162	1786.7	109	2408.8	53	1166.9
	75+	587	8628.5	287	9748.6	300	7774.0
2008 ³	<1	--	--	--	--	--	--
	1-4	--	--	--	--	0	0.0
	5-14	--	--	--	--	--	--
	15-24	8	79.4	--	--	--	--
	25-44	21	93.2	11	101.6	10	85.5
	45-64	160	508.3	103	658.8	57	359.7
	65-74	143	1537.5	84	1820.5	59	1258.8
	75+	591	8416.4	288	9414.8	303	7645.7
2009 ³	<1	6	808.6	--	--	--	--
	1-4	--	--	0	0.0	--	--
	5-14	0	0.0	0	0.0	0	0.0
	15-24	--	--	--	--	0	0.0
	25-44	19	86.8	8	76.4	11	96.2
	45-64	140	442.0	100	634.1	40	251.5
	65-74	172	1819.5	124	2691.6	48	990.5
	75+	564	7876.0	273	8772.5	291	7187.0

Sources: Statistics Canada Annual Mortality Data Files, 2005-2006; NLCHI Mortality System, 2007-2009; Statistics Canada Population Estimates, 2005-2009

¹ Per 100,000 population in respective age group.

² Includes deaths where place of residence within province is unknown.

³ Based on preliminary data (see Technical Notes).

-- Data suppressed due to privacy policies.

**Table 4 Number of Deaths by Age Group and Age-Specific Mortality Rates¹,
Province² and Regional Health Authorities, 2005-2009 (cont'd)**

Year	Age	Total		Western Male		Female	
		No.	Rate	No.	Rate	No.	Rate
2005	<1	8	1221.4	--	--	--	--
	1-4	--	--	--	--	0	0.0
	5-14	--	--	--	--	0	0.0
	15-24	--	--	--	--	--	--
	25-44	24	118.1	16	164.7	8	75.4
	45-64	146	579.7	97	775.6	49	386.4
	65-74	154	2266.7	90	2702.7	64	1847.6
	75+	414	7995.4	217	10009.2	197	6544.9
2006	<1	--	--	--	--	--	--
	1-4	--	--	--	--	--	--
	5-14	--	--	--	--	0	0.0
	15-24	5	49.4	5	98.4	0	0.0
	25-44	16	82.4	8	86.8	8	78.5
	45-64	139	543.6	100	788.5	39	302.7
	65-74	144	2088.2	87	2552.8	57	1634.2
	75+	411	7653.6	206	9304.4	205	6495.6
2007 ³	<1	6	1013.5	--	--	--	--
	1-4	--	--	0	0.0	--	--
	5-14	--	--	--	--	0	0.0
	15-24	5	51.4	5	102.0	0	0.0
	25-44	25	133.7	16	180.7	9	91.5
	45-64	141	544.9	90	701.5	51	391.0
	65-74	150	2135.2	89	2558.2	61	1720.2
	75+	432	7772.6	202	8794.1	230	7053.1
2008 ³	<1	--	--	--	--	--	--
	1-4	--	--	0	0.0	--	--
	5-14	0	0.0	0	0.0	0	0.0
	15-24	10	107.0	--	--	--	--
	25-44	22	119.6	12	137.8	10	103.2
	45-64	119	451.3	76	582.8	43	322.6
	65-74	136	1807.5	78	2116.1	58	1511.2
	75+	466	8360.2	211	9083.1	255	7843.7
2009 ³	<1	--	--	--	--	0	0.0
	1-4	0	0.0	0	0.0	0	0.0
	5-14	--	--	--	--	0	0.0
	15-24	--	--	--	--	0	0.0
	25-44	16	90.2	11	129.9	5	53.9
	45-64	108	408.1	75	571.2	33	247.5
	65-74	154	1991.2	96	2549.8	58	1461.3
	75+	413	7295.5	182	7643.8	231	7042.7

Sources: Statistics Canada Annual Mortality Data Files, 2005-2006; NLCHI Mortality System, 2007-2009;
Statistics Canada Population Estimates, 2005-2009

¹ Per 100,000 population in respective age group.

² Includes deaths where place of residence within province is unknown.

³ Based on preliminary data (see Technical Notes).

-- Data suppressed due to privacy policies

Table 4 Number of Deaths by Age Group and Age-Specific Mortality Rates¹, Province² and Regional Health Authorities, 2005-2009 (cont'd)

Year	Age	Total		Labrador-Grenfell		Female	
		No.	Rate	No.	Rate	No.	Rate
2005	<1	6	1554.4	--	--	--	--
	1-4	--	--	0	0.0	0	0.0
	5-14	--	--	--	--	0	0.0
	15-24	13	223.6	--	--	--	--
	25-44	11	95.0	--	--	--	--
	45-64	36	335.3	21	387.7	15	282.0
	65-74	38	1901.9	29	2685.2	9	980.4
	75+	118	9432.5	67	11531.8	51	7611.9
2006	<1	--	--	--	--	--	--
	1-4	--	--	0	0.0	--	--
	5-14	--	--	--	--	--	--
	15-24	5	86.1	5	171.3	0	0.0
	25-44	21	185.5	16	282.9	5	88.2
	45-64	54	416.4	28	514.5	17	316.9
	65-74	55	2668.6	34	3014.2	21	2250.8
	75+	121	9603.2	65	11484.1	56	8069.2
2007 ³	<1	--	--	0	0.0	--	--
	1-4	--	--	0	0.0	0	0.0
	5-14	0	0.0	0	0.0	0	0.0
	15-24	6	107.6	--	--	--	--
	25-44	11	99.5	--	--	--	--
	45-64	61	563.0	33	604.8	28	520.5
	65-74	52	2472.7	29	2568.6	23	2361.4
	75+	98	7486.6	42	7130.7	56	7777.8
2008 ³	<1	--	--	--	--	--	--
	1-4	0	0.0	0	0.0	0	0.0
	5-14	--	--	--	--	--	--
	15-24	5	94.1	--	--	--	--
	25-44	10	93.3	--	--	--	--
	45-64	34	314.8	20	366.2	14	262.2
	65-74	41	1859.4	23	1952.5	18	1752.7
	75+	108	8238.0	57	9164.0	51	7402.0
2009 ³	<1	--	--	--	--	--	--
	1-4	0	0.0	0	0.0	0	0.0
	5-14	--	--	--	--	0	0.0
	15-24	5	97.4	--	--	--	--
	25-44	19	181.7	14	266.3	5	96.1
	45-64	41	375.0	25	454.0	16	294.9
	65-74	47	2015.4	25	2027.6	22	2001.8
	75+	108	7929.5	54	8320.5	54	7573.6

Sources: Statistics Canada Annual Mortality Data Files, 2005-2006; NLCHI Mortality System, 2007-2009; Statistics Canada Population Estimates, 2005-2009

¹ Per 100,000 population in respective age group.

² Includes deaths where place of residence within province is unknown.

³ Based on preliminary data (see Technical Notes).

-- Data suppressed due to privacy policies

Table 5 Potential Years of Life Lost (PYLL) – Number and Rate per 100,000 Population, Province¹ and Regional Health Authorities, 2005-2009

Region	Total PYLL				
	2005	2006	2007 ²	2008 ²	2009 ²
Province	29,037.50	29,062.50	27,562.50	27,032.50	26,937.50
Eastern	16,280.00	16,682.50	15,332.50	15,432.50	16,402.50
Central	4900.0	5327.5	4867.5	5167.5	4602.5
Western	5375.0	4302.5	4935.0	4482.5	3647.5
Lab-Grenfell	2482.5	2732.5	2280.0	1950.0	2285.0
	Rate per 100,000 population				
Province	5627.8	5699.2	5444.2	5322.5	5293.0
Eastern	5439.0	5627.6	5181.8	5172.5	5452.2
Central	4997.9	5539.8	5149.6	5498.5	4919.5
Western	6722.7	5452.9	6332.0	5706.3	4694.2
Lab-Grenfell	6423.9	7110.3	6012.2	5269.1	6205.0

Source: Statistics Canada Annual Mortality Data Files, 2005-2006; NLCHI Mortality System, 2007-2009; Statistics Canada Population Estimates, 2005-2009

¹ Includes deaths where place of residence within province is unknown.

² Based on preliminary data (see Technical Notes).

Table 6 Potential Years of Life Lost (PYLL) – Number and Rate per 100,000 Population due to the Top Three Causes of Death, Province¹ and Regional Health Authorities, 2005-2006

	2005	2006	2005	2006
Diseases of the Circulatory System				
Province	6455.0	6197.5	1251.1	1215.3
Eastern	3870.0	3442.5	1292.9	1161.3
Central	1035.0	1270.0	1055.7	1320.6
Western	1232.5	1047.5	1541.5	1327.6
Lab-Gren	317.5	420.0	821.6	1092.9
Neoplasms				
Province	9472.5	9880.0	1835.9	1937.5
Eastern	5677.5	5650.0	1896.8	1906.0
Central	1800.0	1910.0	1836.0	1986.1
Western	1585.0	1685.0	1982.4	2135.5
Lab-Gren	410.0	635.0	1060.9	1652.4
Diseases of the Respiratory System				
Province	1045.0	1300.0	202.5	254.9
Eastern	665.0	782.5	222.2	264.0
Central	77.5	180.0	79.0	187.2
Western	272.5	165.0	340.8	209.1
Lab-Gren	30.0	172.5	77.6	448.9

Sources: Statistics Canada Annual Mortality Data Files, 2005-2006; Statistics Canada Population Estimates, 2005-2006

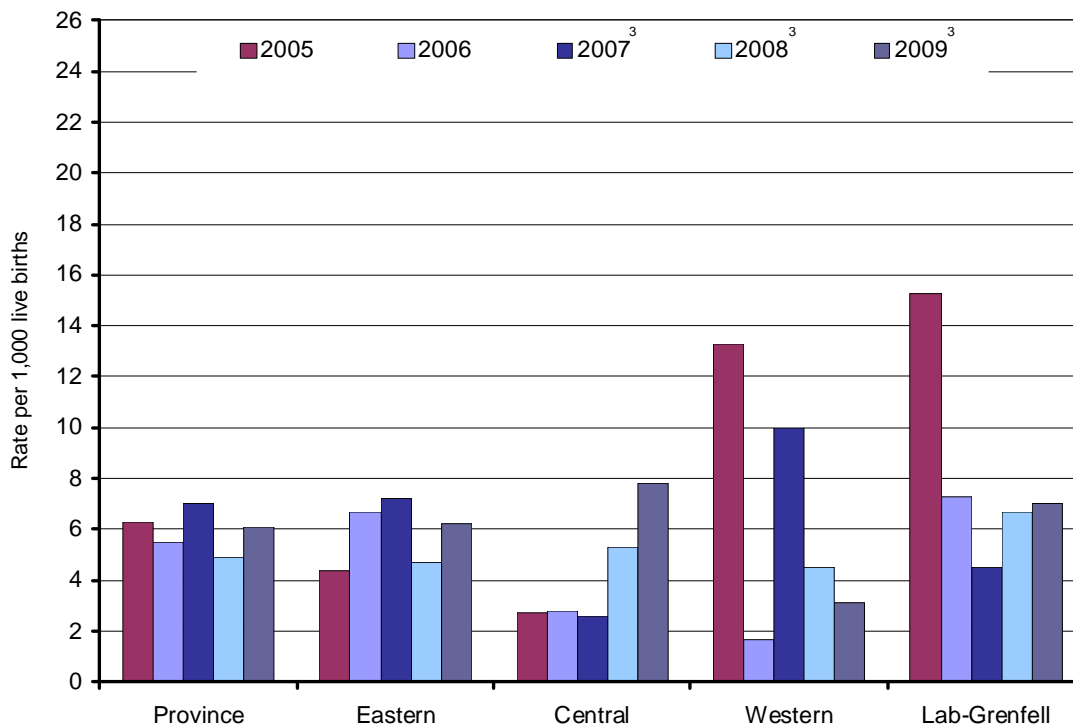
¹Includes deaths where place of residence within province is unknown.

Table 7 Number of Infant Deaths and Infant Mortality Rate¹, Province² and Regional Health Authorities, 2005-2009

Region	2005		2006		2007 ³		2008 ³		2009 ³	
	No	Rate	No	Rate	No	Rate	No	Rate	No	Rate
Province	28	6.3	25	5.5	32	7.0	24	4.9	30	6.1
Eastern	12	4.4	19	6.7	20	7.2	14	4.7	19	6.2
Central	--	--	--	--	--	--	--	--	6	7.8
Western	8	13.3	--	--	6	10.0	--	--	--	--
Lab-Grenfell	--	--	--	--	--	--	--	--	--	--

Sources: Statistics Canada Annual Mortality Data Files, 2005-2006; NLCHI Mortality System, 2007-2009; NLCHI Live Birth System, 2005-2009

Figure 2 Infant Mortality Rate¹, Province² and Regional Health Authorities, 2005-2009



Sources: Statistics Canada Annual Mortality Data Files, 2005-2006; NLCHI Mortality System, 2007-2009; NLCHI Live Birth System, 2005-2009

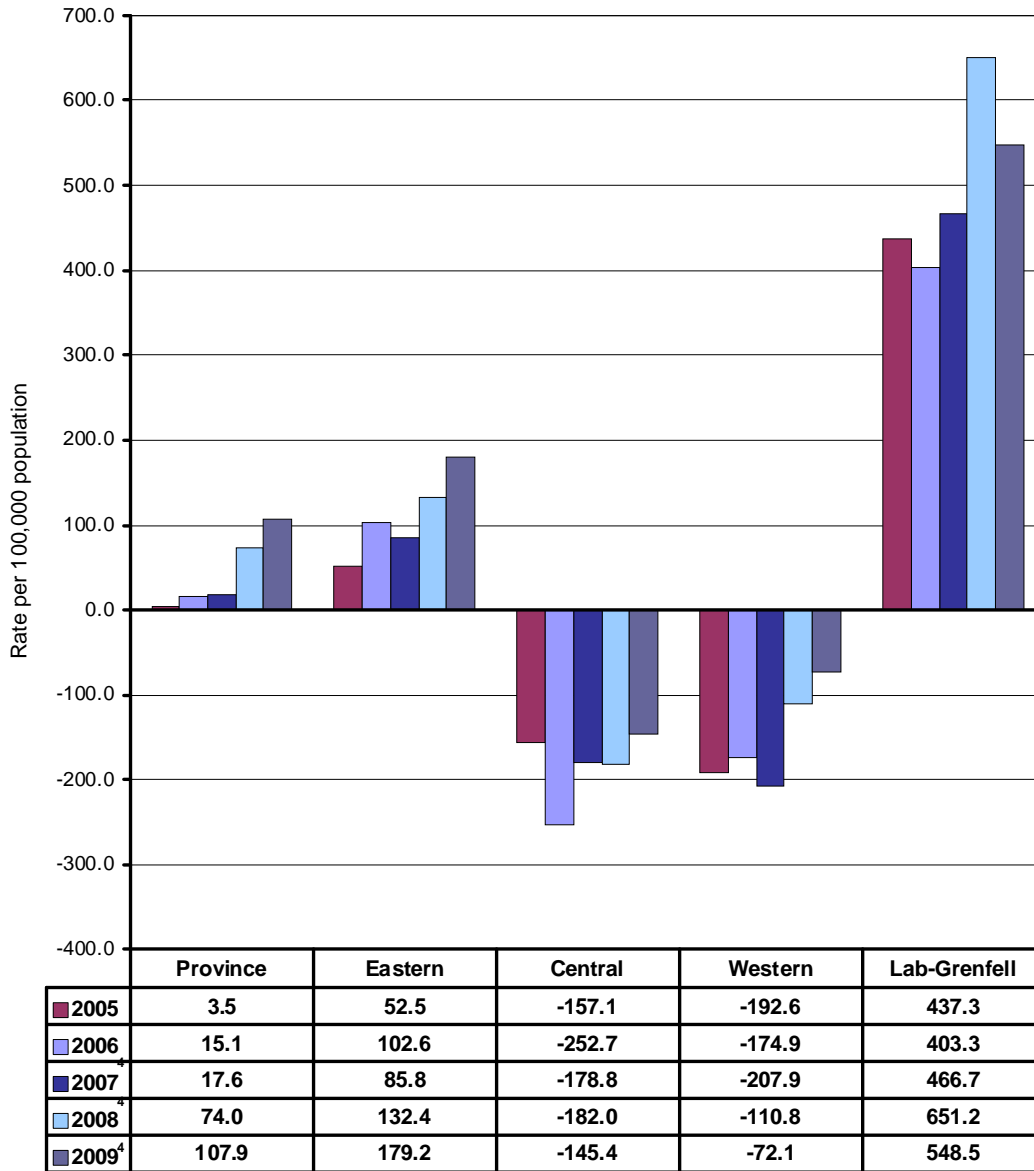
¹ Per 1,000 live births.

² Includes deaths where place of residence within province is unknown.

³ Based on preliminary data (see Technical Notes).

--Data suppressed due to privacy policies.

Figure 3 Rate of Natural Increase^{1,2}, Province³ and Regional Health Authorities, 2005-2009



Sources: Statistics Canada Annual Mortality Data Files, 2005-2006; NLCHI Mortality System, 2007-2009; NLCHI Live Birth System, 2005-2009; Statistics Canada Population Estimates, 2005-2009

¹ Per 100,000 population.

² See Glossary for definition

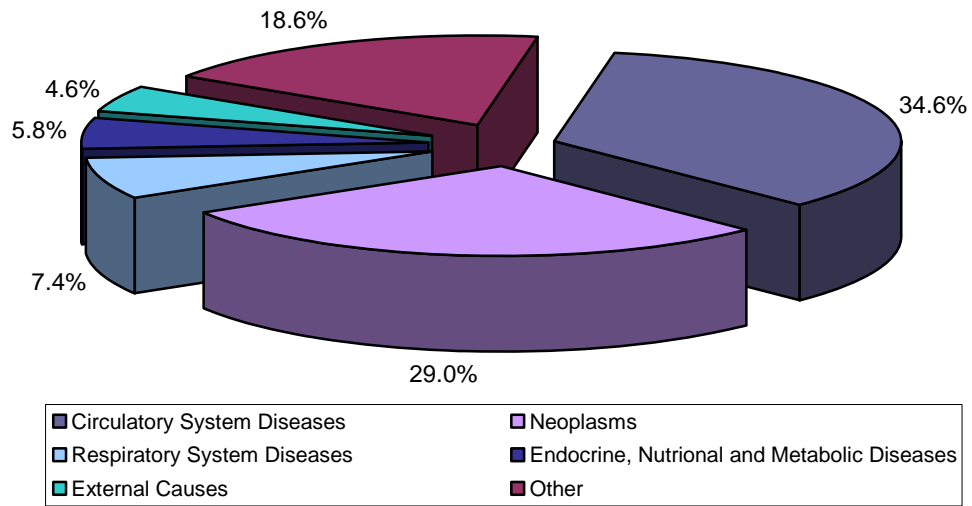
³ Includes deaths where place of residence within province is unknown.

⁴ Based on preliminary data (see Technical Notes).

Section 2

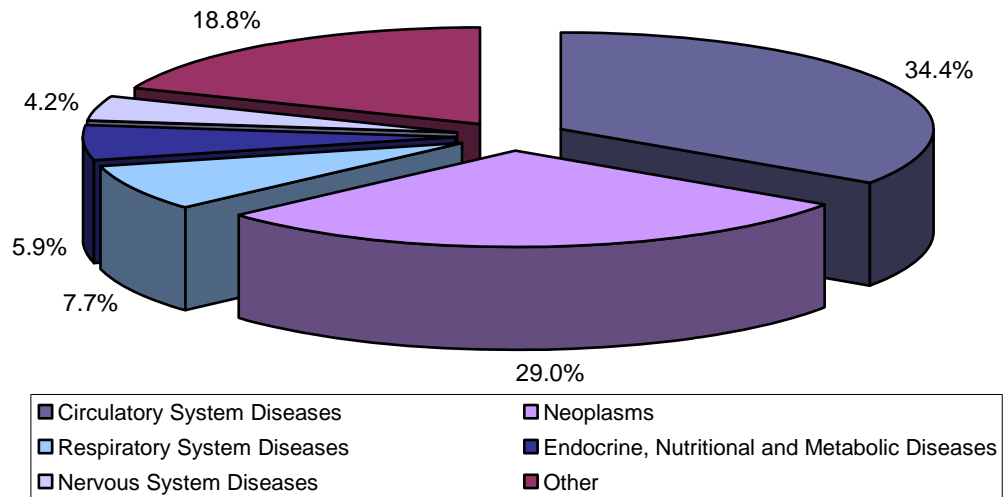
Causes of Death

Figure 4 Causes of Death by Disease Chapter¹, Province², 2006



Source: Statistics Canada Annual Mortality Data File, 2006

Figure 5 Causes of Death by Disease Chapter¹, Eastern Regional Health Authority, 2006

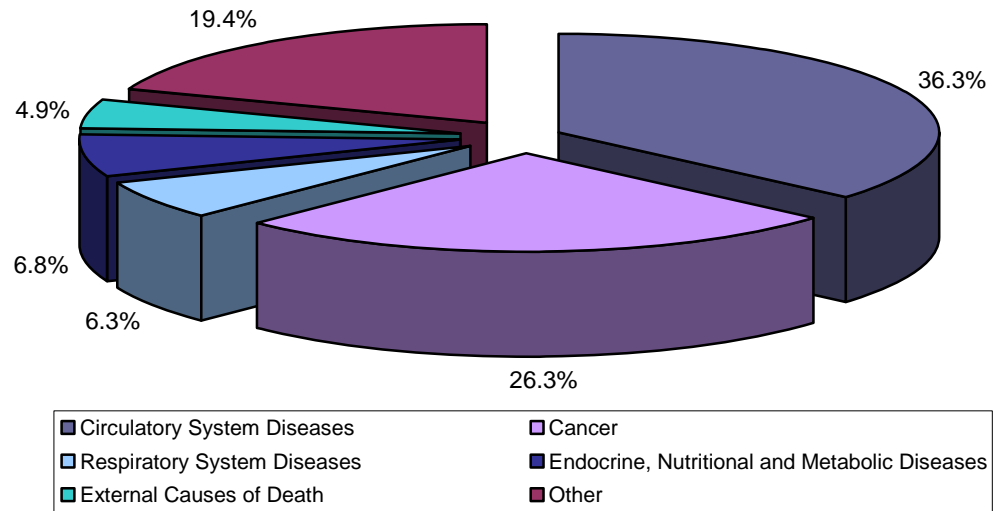


Source: Statistics Canada Annual Mortality Data File, 2006

¹ See Technical Notes.

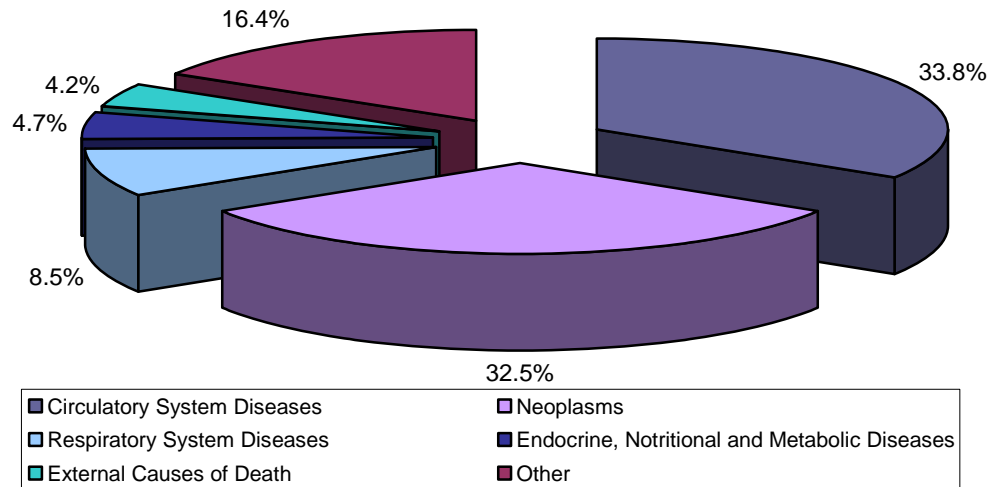
² Includes deaths where place of residence within province is unknown.

Figure 6 Causes of Death by Disease Chapter¹, Central Regional Health Authority, 2006



Source: Statistics Canada Annual Mortality Data File, 2006

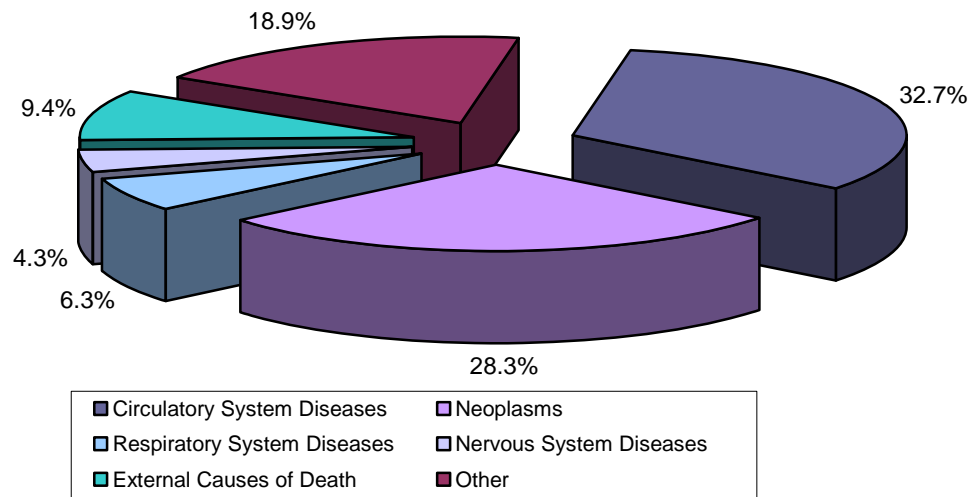
Figure 7 Causes of Death by Disease Chapter¹, Western Regional Health Authority, 2006



Source: Statistics Canada Annual Mortality Data File, 2006

¹ See Technical Notes

Figure 8 Causes of Death by Disease Chapter¹, Labrador-Grenfell Regional Health Authority, 2006



Source: Statistics Canada Mortality Data File, 2006

¹ See Technical Notes

Section 3

Life Expectancy Canada and Provinces

Figure 9 Life Expectancy at Birth by Sex, Canada and Provinces, 2006

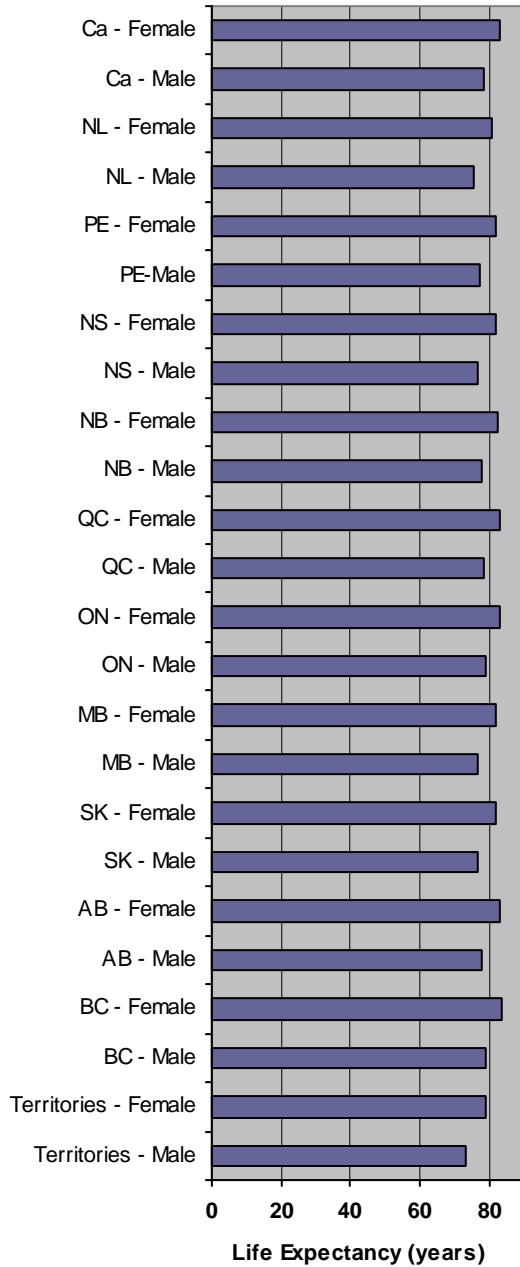
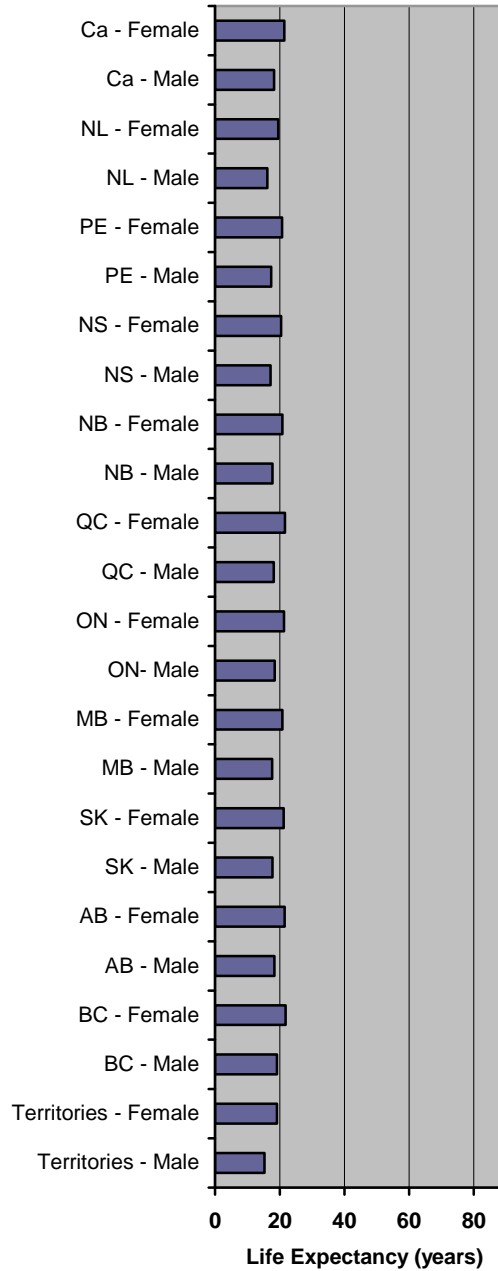


Figure 10 Life Expectancy at Age 65 by Sex, Canada and Provinces, 2006



Source: Statistics Canada. Table 102-0511 – Life expectancy, abridged life table, at birth and at age 65, by sex, Canada, provinces and territories, annual (years), CANSIM (database).

Table 8 Life Expectancy at Birth and at Age 65, Both Sexes, Canada and Provinces, 2006

	Total											
	CA	NL	PE	NS	NB	QC	ON	MB	SK	AB	BC	Terr ¹
Birth	80.8	78.2	79.9	79.6	80.1	80.9	81.1	79.3	79.4	80.5	81.4	75.7
Age 65	19.9	17.9	19.1	18.9	19.4	20.0	20.0	19.3	19.5	20.0	20.5	16.8

Source: Statistics Canada. Table 102-0511 – Life expectancy, abridged life table, at birth and at age 65, by sex, Canada, provinces and territories, annual (years), CANSIM (database).

Table 9 Life Expectancy at Birth and at Age 65, Males, Canada and Provinces, 2006

	Male											
	CA	NL	PE	NS	NB	QC	ON	MB	SK	AB	BC	Terr ¹
Birth	78.4	75.6	77.3	77.0	77.7	78.3	78.9	76.8	76.8	78.1	79.2	73.1
Age 65	18.2	16.1	17.3	17.1	17.7	18.1	18.4	17.6	17.7	18.3	19.1	15.2

Source: Statistics Canada. Table 102-0511 – Life expectancy, abridged life table, at birth and at age 65, by sex, Canada, provinces and territories, annual (years), CANSIM (database).

Table 10 Life Expectancy at Birth and at Age 65, Females, Canada and Provinces, 2006

	Female											
	CA	NL	PE	NS	NB	QC	ON	MB	SK	AB	BC	Terr ¹
Birth	83.0	80.8	82.2	82.2	82.4	83.3	83.2	81.7	82.0	82.9	83.6	78.9
Age 65	21.4	19.5	20.7	20.4	20.8	21.6	21.3	20.8	21.2	21.5	21.8	19.1

Source: Statistics Canada. Table 102-0511 – Life expectancy, abridged life table, at birth and at age 65, by sex, Canada, provinces and territories, annual (years), CANSIM (database).

¹Terr refers to the Territories which include Yukon, Northwest Territories and Nunavut

Glossary

Crude Mortality Rate: total number of people who died divided by the total population of interest. This number is usually multiplied by 100,000 (or some other constant) and expressed per 100,000 population.

Age-Standardization: a technique used to eliminate or reduce the effect of different age structures so that rates can be compared between populations.

Age-Specific Mortality Rate: number of deaths in a specific age group divided by the total population in that age group. The number is usually multiplied by 100,000 and expressed per 100,000 population.

Potential Years of Life Lost (PYLL): number of years of life lost when a person dies before age 75.

Infant Mortality Rate: number of infants who die in the first year of life divided by the number of live births in that year. This number is generally multiplied by 1,000 and expressed per 1,000 live births.

Rate of Natural Increase: the difference between the number of births minus the number of deaths in a population per year divided by the population for that year.

Life Expectancy: number of years a person would be expected to live on the basis of mortality statistics for a certain period of time, usually a calendar year. This is calculated from birth (life expectancy at birth) and at age 65 (life expectancy at age 65).



70 O'Leary Avenue, St. John's, NL A1B 2C7
Telephone: 709-752-6000 • Facsimile: 709-752-6011

Registry Integrity Unit, 41 Conception Bay Highway
E. K. Jerrett & Associate Building, Bay Roberts, NL A0A 1G0
Telephone: 866-279-1198 • Facsimile: 709-786-5337

www.nlchi.nl.ca