

**Live Birth Trends
2006-2010
Province and
Regional Health Authorities**

Date: December 2011



Copyright Notice

**This document is fully copyright protected by the
Newfoundland and Labrador Centre for Health Information**

Table of Contents

Introduction	6
Highlights.....	7
Technical Notes.....	8
Section 1: Live Birth Trends Canada and Atlantic Provinces (2005-2008)	9
Total Live Births and Crude Birth Rates.....	10
Percentage of Live Births to Teen Mothers.....	11
Mean Age of Mother (years)	12
Section 2: Live Birth Trends Province and Regional Health Authorities (2006-2010)	13
Total Live Births and Crude Birth Rates by Sex.....	14
Number and Percentage of Live Births by Month.....	16
Number and Percentage of Live Births by Caesarean Section Delivery.....	17
Rate of Natural Increase.....	18
Number of Live Births by Mother's Age and Age-Specific Fertility Rates	19
Sets of Twins.....	20
Number and Percentage of Pre-term, Term and Post-term Live Births	21
Number and Percentage of Live Births of Low, Normal and High Birth Weight	22
Number and Rate of Stillbirths.....	23
Number of Live Births to Out-of-Province Residents.....	24
Section 3: Live Birth Trends by Age of Mother Province and Regional Health Authorities (2006-2010)	25
Mean Age of Mother (years)	26
Number and Percentage of Live Births to First-Time Mothers by Age Group.....	27
Number and Percentage of Live Births to Teen Mothers	29
Mean Weight of Live Births to Teen Mothers and Non-Teen Mothers.....	30
Glossary.....	31
Appendix	32

Tables

Table 1.1	Total Live Births and Crude Birth Rates, Canada and Atlantic Provinces
Table 1.2	Percentage of Live Births to Teen Mothers, Canada and Atlantic Provinces
Table 1.3	Mean Age of Mother, Canada and Atlantic Provinces
Table 2.1	Total Live Births and Crude Birth Rates by Sex, Province and Regional Health Authorities
Table 2.2	Number and Percentage of Live Births by Month and Year
Table 2.3	Number and Percentage of Live Births by Caesarean Section Delivery, Province and Regional Health Authorities
Table 2.4	Number of Live Births by Mother's Age and Age-Specific Fertility Rates, Province and Regional Health Authorities
Table 2.5	Sets of Twins, Province and Regional Health Authorities
Table 2.6	Number and Percentage of Pre-Term Live Births, Province and Regional Health Authorities
Table 2.7	Number and Percentage of Term Live Births, Province and Regional Health Authorities
Table 2.8	Number and Percentage of Post-Term Live Births, Province and Regional Health Authorities
Table 2.9	Number and Percentage of Live Births with Low Birth Weight, Province and Regional Health Authorities
Table 2.10	Number and Percentage of Live Births with Normal Birth Weight, Province and Regional Health Authorities
Table 2.11	Number and Percentage of Live Births with High Birth Weight, Province and Health and Regional Health Authorities
Table 2.12	Number and Rate of Stillbirths, Province
Table 2.13	Number of Live Births to Out-of-Province Residents
Table 3.1	Mean Age of Mother, Province and Regional Health Authorities

Figures

- Figure 1.1 Crude Birth Rates, Canada and Atlantic Provinces
- Figure 1.2 Percentage of Live Births to Teen Mothers, Canada and Atlantic Provinces
- Figure 1.3 Mean Age of Mother, Canada and Atlantic Provinces
- Figure 2.1 Crude Birth Rates, Province and Regional Health Authorities
- Figure 2.2 Average Percentage of Live Births by Month, Province, 2006 - 2010
- Figure 2.3 Percentage of Live Births by Caesarean Section Delivery, Province and Regional Health Authorities
- Figure 2.4 Rate of Natural Increase, Province and Regional Health Authorities
- Figure 2.5 Rate of Stillbirths, Province
- Figure 3.1 Mean Age of Mother, Province and Regional Health Authorities
- Figure 3.2 Percentage of Live Births to First-Time Mothers, Province and Regional Health Authorities
- Figure 3.3 Percentage of Live Births to Teen Mothers, Province and Regional Health Authorities
- Figure 3.4 Mean Weight (grams) of Live Births to Teen Mothers and Non-Teen Mothers, Province

Introduction

This publication is the eighth Live Birth Trends report prepared by the Newfoundland and Labrador Centre for Health Information (the Centre). A majority of the indicators presented were derived from the Live Birth System, maintained by the Centre. The Live Birth System contains data from the Live Birth Notification Form completed in provincial health care facilities and provided to the Centre by the Vital Statistics Division, Department of Government Services. The form captures clinical and demographic data for both resident and non-resident live births occurring in the province.

Section 1 of the report presents live birth trends for Canada and the Atlantic Provinces for 2005 to 2008. Sections 2 and 3 of the report present live birth trends for the province and the Regional Health Authorities for 2006 to 2010.

If you would like more information about this report or any other report published by the Centre, visit our web site at www.nlchi.nl.ca/research_reports.php or contact:

Centre for Health Information
70 O'Leary Avenue
St. John's, NL, A1B 2C7
(709) 752-6001
E-mail: submit@nlchi.nl.ca

Highlights

- In 2010, there were 4,855 live births to residents of Newfoundland and Labrador occurring in the province, an increase of 6.7% from 2006.
- Among the Atlantic Provinces, Newfoundland and Labrador has had the lowest crude birth rate each year from 2005 to 2008.
- From 2006 to 2010, Labrador-Grenfell Health continued to have the highest crude birth rate among regional health authorities.
- On average, the number of births for 2006 to 2010 was highest between July and October and lowest between December and February.
- In 2010, the provincial rate of natural increase was 0.8 per 1,000 population, an increase from the 2006 rate of 0.2 per 1,000 population. The rate of natural increase is the total live births in a population minus the total deaths in the same population.
- There has been an upward trend in the rate of live births delivered by caesarean section, steadily increasing from 30.9% in 2006 to 33.0% in 2010.
- Overall, the percentage of pre-term births was highest for the Eastern Health Authority and lowest for the Western Health Authority between 2006 and 2010.
- Overall, between 2006 and 2010, Eastern Health had the highest percentage of low birth weight births and Labrador-Grenfell Health had the highest percentage of high birth weight births.
- From 2006 to 2010, the mean weight of live births has been consistently lower for teen mothers than for non-teen mothers.
- From 2006 to 2010, the mean age of mothers in the province ranged from 28.8 to 29.0 years.

Technical Notes

- In Section 1, statistics are reported for the years 2005 to 2008, the latest data available from Statistics Canada at the time of publication. Rates were derived from *Statistics Canada, Births, Shelf Tables*.
- In Sections 2 and 3, rates were calculated using population estimates from Statistics Canada. In previous reports, population projections were used for the denominator value in the calculation of rates.
- There are some differences that exist between NL data presented in Section 1 and that of Sections 2 and 3. In Section 1, Statistics Canada captures resident live births for each province in Canada, regardless of place of birth. In Sections 2 and 3, the Live Birth System captures only live births occurring in the province of Newfoundland and Labrador; births to NL residents occurring outside the province are not captured in the Live Birth System.
- In the current report, births to out-of-province residents that occurred in NL are excluded from the provincial totals and are reported separately in Table 2.13. Previous reports included births to out-of-province residents occurring in NL in provincial totals.
- The Live Birth System has undergone quality assurance procedures which may have resulted in changes in the information presented from previous reports.
- In Sections 2 and 3, rates were calculated based on the Regional Health Authority boundaries which came into effect April 1, 2005.
- Statistics for Regional Health Authorities are based on mother's place of residence. For example, a live birth occurring in Eastern Health, where the mother's place of residence is within Western Health, would be included in results for Western Health.
- Definitions for live birth, low, normal and high birth weight, pre-term, term and post-term live birth and stillbirth were adapted from the report *Statistics Canada, Births, 2008*.
- Calculations for indicator measures are presented as an appendix.

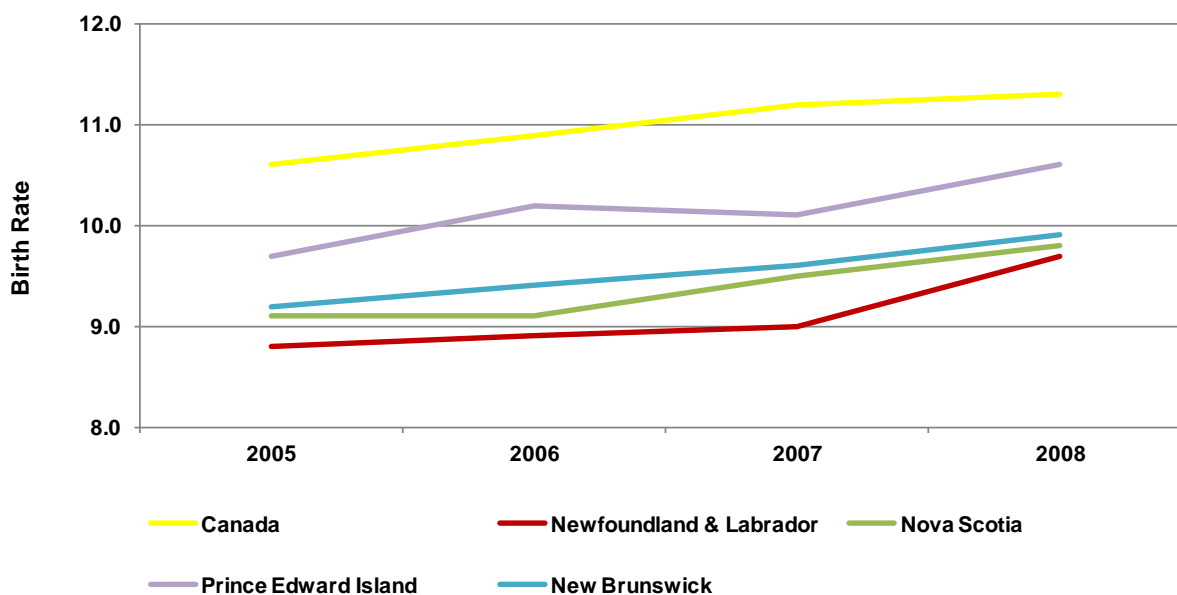
**SECTION 1
LIVE BIRTH TRENDS
CANADA AND ATLANTIC PROVINCES
2005-2008**

Table 1.1 Total Live Births and Crude Birth Rates¹, Canada and Atlantic Provinces

Year	Canada		NL		NS		PEI		NB	
	No.	Rate	No.	Rate	No.	Rate	No.	Rate	No.	Rate
2005	342176	10.6	4501	8.8	8557	9.1	1340	9.7	6892	9.2
2006	354617	10.9	4542	8.9	8485	9.1	1413	10.2	7030	9.4
2007	367864	11.2	4553	9.0	8868	9.5	1389	10.1	7146	9.6
2008	377886	11.3	4898	9.7	9188	9.8	1483	10.6	7402	9.9

Source: Statistics Canada, Births, 2005-2008

Figure 1.1 Crude Birth Rates¹, Canada and Atlantic Provinces



Source: Statistics Canada, Births, 2005-2008

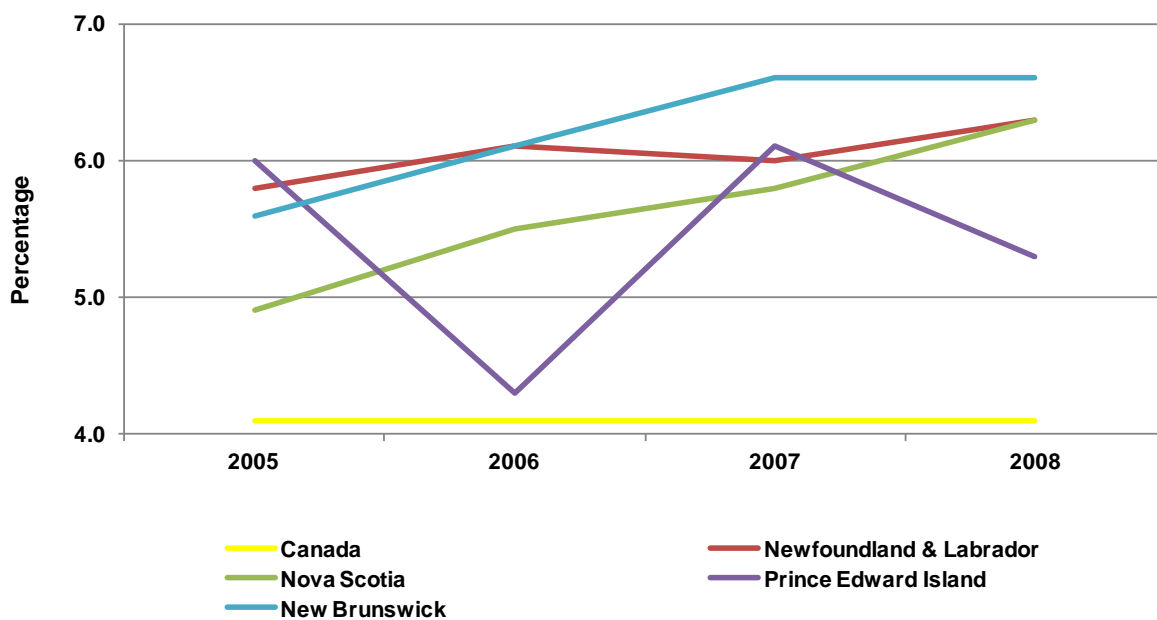
¹ Per 1,000 population

Table 1.2 Percentage of Live Births to Teen¹ Mothers, Canada and Atlantic Provinces

Year	Canada	NL	NS	PEI	NB
2005	4.1	5.8	4.9	6.0	5.6
2006	4.1	6.1	5.5	4.3	6.2
2007	4.2	6.1	5.8	6.1	6.6
2008	4.2	6.3	6.3	5.3	6.6

Source: Statistics Canada, Births, 2005-2008

Figure 1.2 Percentage of Live Births to Teen¹ Mothers, Canada and Atlantic Provinces



Source: Statistics Canada, Births, 2005-2008

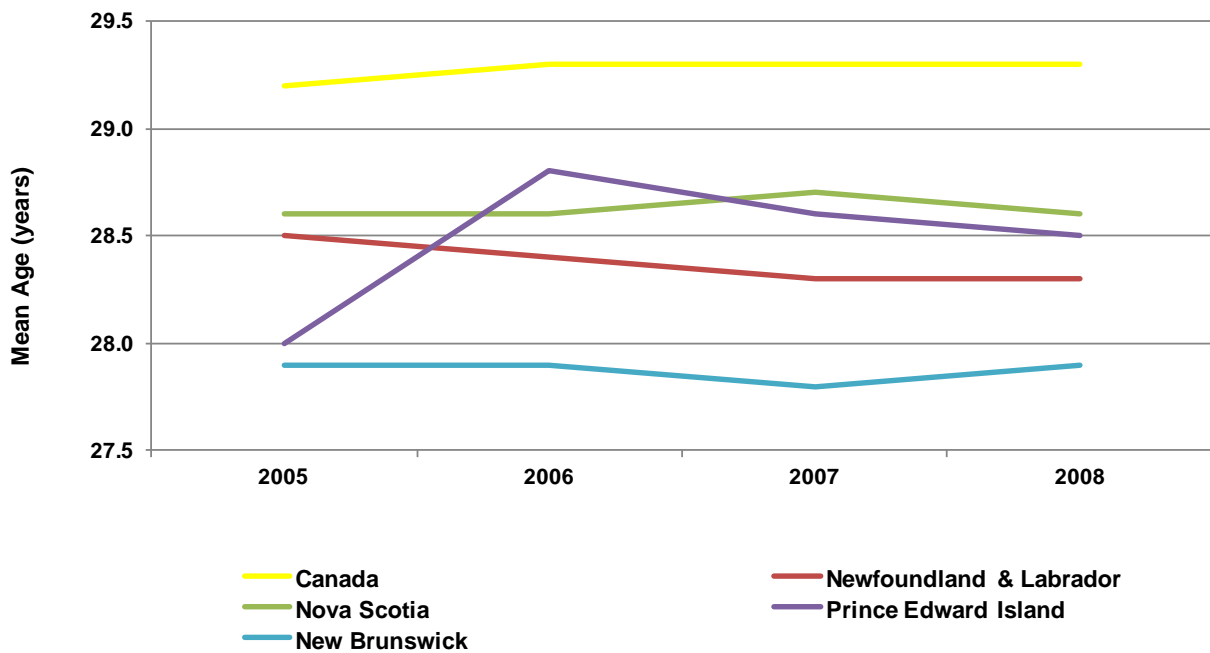
¹ Includes live births to females 19 years of age and under

Table 1.3 Mean Age of Mother (years), Canada and Atlantic Provinces

Year	Canada	NL	NS	PEI	NB
2005	29.2	28.5	28.6	28.0	27.9
2006	29.3	28.4	28.6	28.8	27.9
2007	29.3	28.3	28.7	28.6	27.8
2008	29.3	28.3	28.6	28.5	27.9

Source: Statistics Canada, Births, 2005-2008

Figure 1.3 Mean Age of Mother, Canada and Atlantic Provinces



Source: Statistics Canada, Births, 2005-2008

SECTION 2
LIVE BIRTH TRENDS
PROVINCE AND REGIONAL HEALTH AUTHORITIES
2006-2010

Table 2.1 Total Live Births and Crude Birth Rates¹ by Sex, Province and Regional Health Authorities

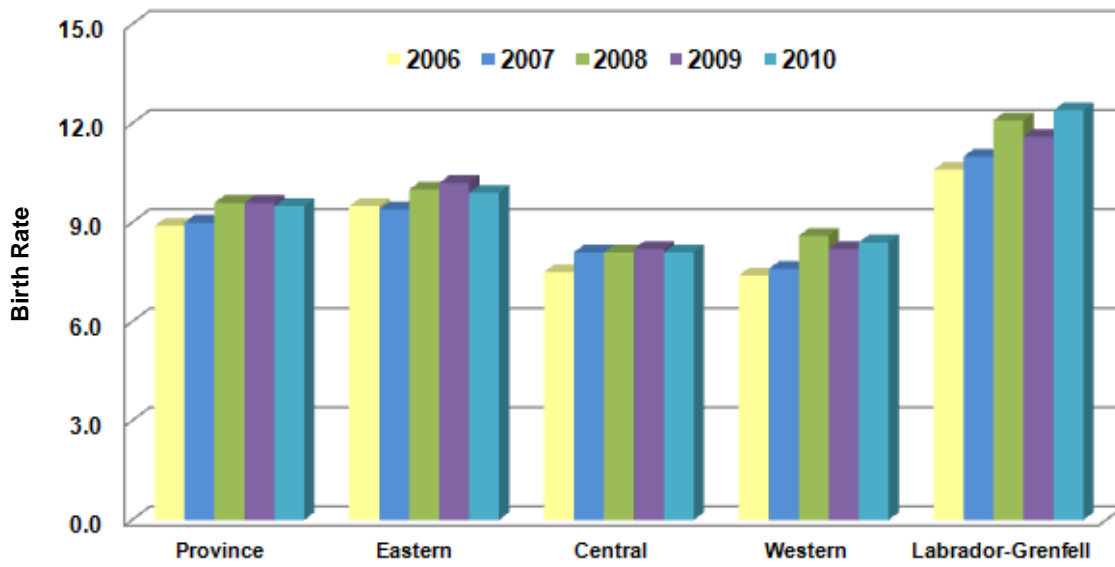
Year	Sex	Province		Eastern		Central		Western		Labrador-Grenfell	
		Total	Rate	Total	Rate	Total	Rate	Total	Rate	Total	Rate
2006	Male	2391	9.6	1475	10.2	381	8.0	308	8.0	227	11.7
	Female	2139	8.2	1342	8.8	341	7.0	274	6.8	182	9.5
	Total	4530	8.9	2817	9.5	722	7.5	582	7.4	409	10.6
2007	Male	2324	9.3	1407	9.7	399	8.6	309	8.0	209	11.1
	Female	2222	8.6	1365	9.0	370	7.7	289	7.2	198	10.9
	Total	4546	9.0	2772	9.4	769	8.1	598	7.6	407	11.0
2008	Male	2470	9.9	1500	10.3	389	8.4	355	9.3	226	12.1
	Female	2393	9.3	1489	9.8	370	7.8	315	7.9	219	12.1
	Total	4863	9.6	2989	10.0	759	8.1	670	8.6	445	12.1
2009	Male	2566	10.3	1593	10.9	402	8.7	348	9.2	223	12.0
	Female	2332	9.0	1470	9.6	367	7.7	292	7.3	203	11.3
	Total	4899	9.6	3064	10.2	769	8.2	640	8.2	426	11.6
2010	Male	2479	9.9	1521	10.3	385	8.4	346	9.2	227	12.3
	Female	2376	9.1	1474	9.5	374	7.9	307	7.7	221	12.4
	Total	4855	9.5	2995	9.9	759	8.1	653	8.4	448	12.4

Source: Live Birth System, Centre for Health Information, 2006-2010

¹Per 1,000 population

Note: Sum of male and female live births may not equal total live births due to missing sex for some births.

Figure 2.1 Crude Birth Rates¹, Province and Regional Health Authorities



Source: Live Birth System, Centre for Health Information, 2006-2010

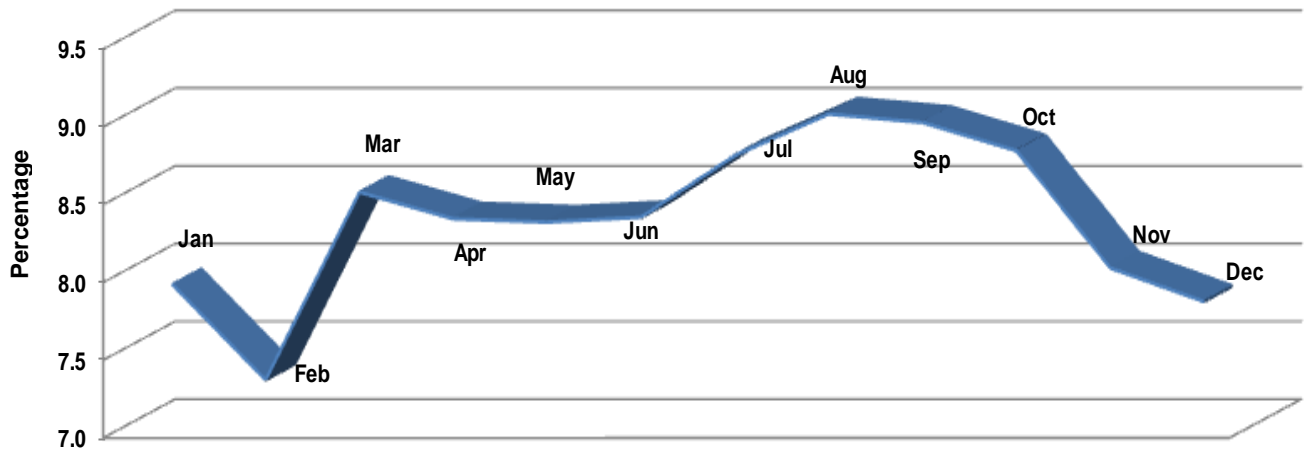
¹ Per 1,000 population

Table 2.2 Number and Percentage of Live Births by Month, Province

Year		Jan	Feb	Mar	Apr	May	Jun	Jul	Aug	Sep	Oct	Nov	Dec
2006	No.	370	325	377	409	394	396	385	390	397	364	361	362
	%	8.2	7.2	8.3	9.0	8.7	8.7	8.5	8.6	8.8	8.0	8.0	8.0
2007	No.	391	311	396	365	378	376	411	405	404	400	350	359
	%	8.6	6.8	8.7	8.0	8.3	8.3	9.0	8.9	8.9	8.8	7.7	7.9
2008	No.	361	363	405	379	428	378	428	473	464	433	382	369
	%	7.4	7.5	8.3	7.8	8.8	7.8	8.8	9.7	9.5	8.9	7.9	7.6
2009	No.	357	385	413	396	387	420	441	449	420	466	423	342
	%	7.3	7.9	8.4	8.1	7.9	8.6	9.0	9.2	8.6	9.5	8.6	7.0
2010	No.	393	347	424	424	381	406	406	419	437	418	385	415
	%	8.1	7.1	8.7	8.7	7.8	8.4	8.4	8.6	9.0	8.6	7.9	8.5

Source: Live Birth System, Centre for Health Information, 2006-2010

Figure 2.2 Average Percentage of Live Births by Month, Province, 2006-2010



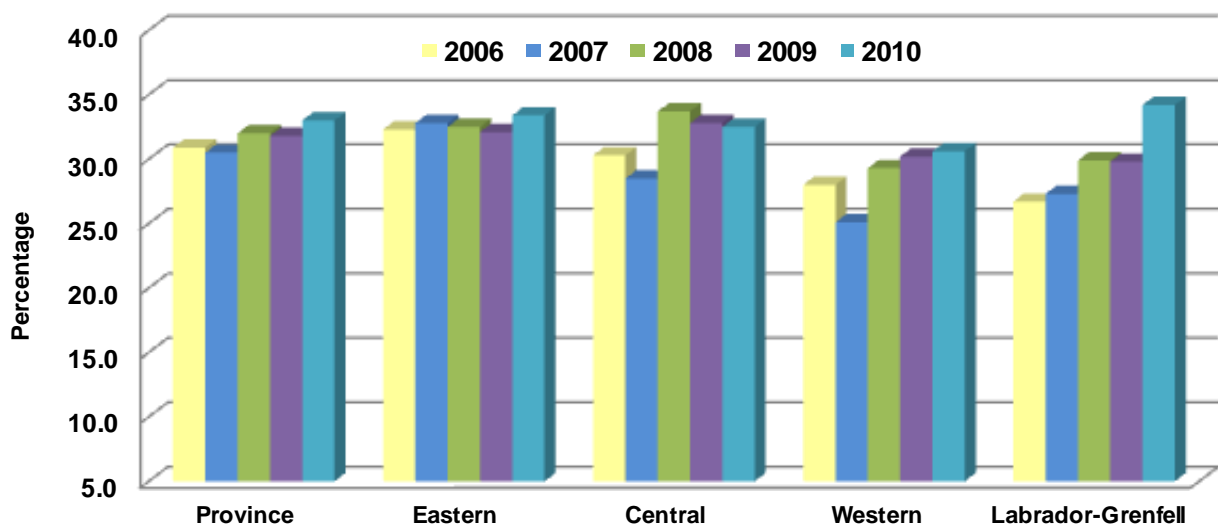
Source: Live Birth System, Centre for Health Information, 2006-2010

Table 2.3 Number and Percentage of Live Births by Caesarean Section Delivery, Province and Regional Health Authorities

Year	Province		Eastern		Central		Western		Labrador-Grenfell	
	No.	%	No.	%	No.	%	No.	%	No.	%
2006	1400	30.9	909	32.3	219	30.3	163	28.0	109	26.7
2007	1388	30.5	908	32.8	219	28.5	150	25.1	111	27.3
2008	1556	32.0	971	32.5	256	33.7	196	29.3	133	29.9
2009	1557	31.8	985	32.1	252	32.8	193	30.2	127	29.8
2010	1601	33.0	1001	33.4	247	32.5	200	30.6	153	34.2

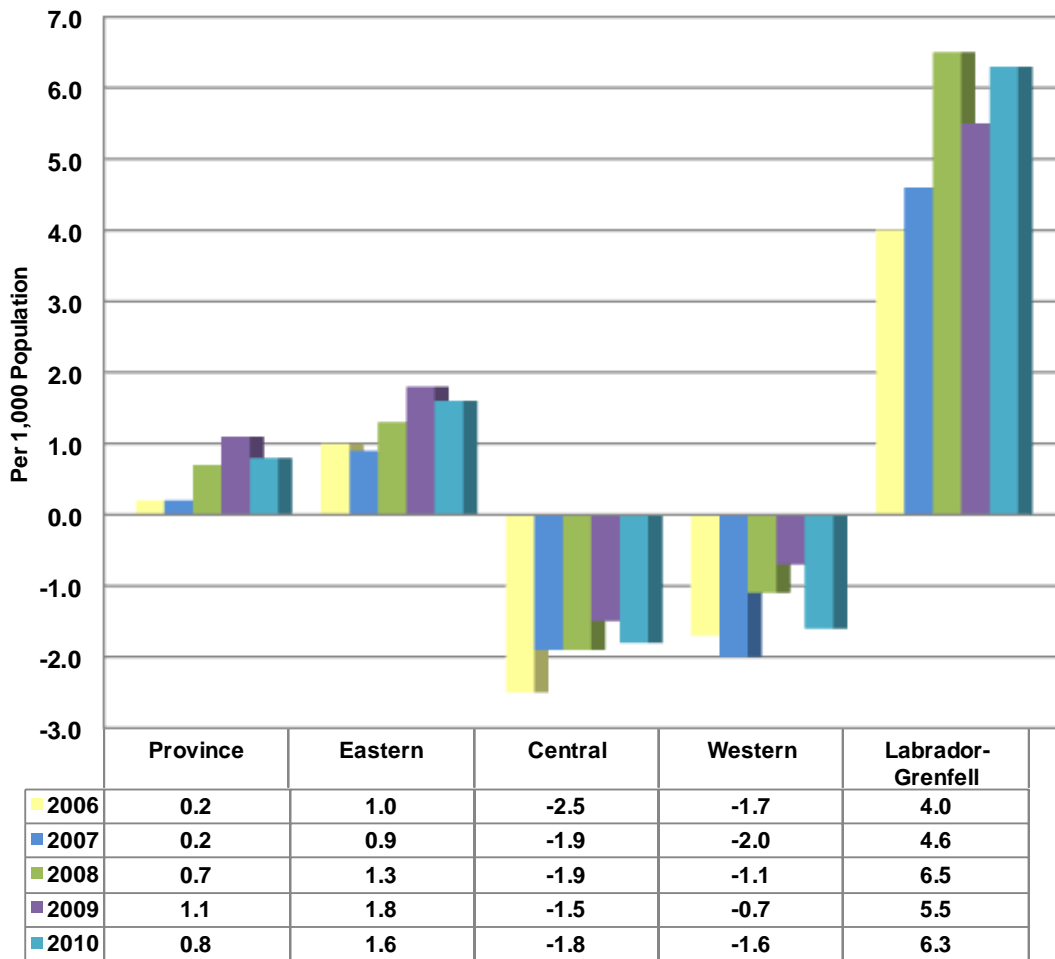
Source: Live Birth System, Centre for Health Information, 2006-2010

Figure 2.3 Percentage of Live Births by Caesarean Section Delivery, Province and Regional Health Authorities



Source: Live Birth System, Centre for Health Information, 2006-2010

Figure 2.4 Rate¹ of Natural Increase, Province² and Regional Health Authorities



Source: Live Birth System, Centre for Health Information, 2006-2010; Annual Mortality File, Statistics Canada, 2006-2007; Mortality System, Centre for Health Information, 2008-2010

¹ Per 1,000 population

² Includes deaths in Newfoundland and Labrador where the regional health authority of residence is unknown.

Table 2.4 Number of Live Births by Mother's Age and Age-Specific Fertility Rates¹, Province and Regional Health Authorities

Year	Age Group (Years)	Province		Eastern		Central		Western		Labrador-Grenfell	
		No.	Rate	No.	Rate	No.	Rate	No.	Rate	No.	Rate
2006	15-19 ²	274	16.6	121	12.9	53	17.3	54	20.7	46	31.5
	20-24	922	54.4	495	48.6	185	63.9	127	52.2	115	80.5
	25-29	1363	87.8	815	77.4	260	122.3	160	88.0	128	121.8
	30-34	1325	82.0	922	93.7	147	51.0	171	77.9	85	67.8
	35-39	578	30.3	416	37.4	66	19.2	---	---	---	---
	40-49	68	1.6	48	1.9	11	1.4	---	---	---	---
2007	15-19 ²	274	16.8	127	13.4	43	14.7	47	18.7	57	41.3
	20-24	902	57.4	457	44.7	193	88.9	141	66.4	111	93.3
	25-29	1382	96.0	804	84.8	246	119.0	213	121.0	119	109.0
	30-34	1361	85.5	933	95.6	204	74.9	140	63.7	84	68.0
	35-39	553	29.7	398	36.4	73	21.2	---	---	---	---
	40-49	74	1.7	53	2.1	10	1.3	---	---	---	---
2008	15-19 ²	303	19.1	133	14.2	56	20.3	62	25.8	52	39.2
	20-24	1016	65.2	524	51.8	186	87.6	182	85.8	124	101.5
	25-29	1426	99.2	833	87.3	253	126.4	190	109.4	150	136.2
	30-34	1440	92.3	1014	103.9	179	68.2	158	78.5	89	74.0
	35-39	594	32.9	427	39.8	74	22.3	---	---	---	---
	40-49	84	2.0	58	2.3	11	1.4	---	---	---	---
2009	15-19 ²	298	19.3	139	15.1	59	22.2	51	21.6	49	39.4
	20-24	913	58.4	482	47.7	165	76.4	160	74.2	106	87.5
	25-29	1492	102.0	924	93.5	251	132.1	184	105.6	133	120.7
	30-34	1504	97.4	1031	105.0	206	81.8	172	90.5	95	79.0
	35-39	608	34.6	421	40.0	79	24.8	---	---	---	---
	40-49	84	2.0	67	2.7	9	1.2	---	---	---	---

Source: Live Birth System, Centre for Health Information, 2006-2010

¹ Per 1,000 women in respective age group

² Includes live births to females 19 years of age and under per 1,000 females aged 15 to 19.

--- Data suppressed where cell count less than 5 or due to privacy policies.

Table 2.4 Number of Live Births by Mother's Age and Age-Specific Fertility Rates¹, Province and Regional Health Authorities - *Continued*

Year	Age Group (Years)	Province		Eastern		Central		Western		Labrador-Grenfell	
		No.	Rate	No.	Rate	No.	Rate	No.	Rate	No.	Rate
2010	15-19 ²	324	21.9	136	15.3	58	23.0	66	28.9	64	57.0
	20-24	904	57.2	454	44.5	186	83.6	156	71.4	108	89.2
	25-29	1470	99.7	884	87.8	250	137.2	191	109.0	145	131.0
	30-34	1460	94.9	1013	102.2	191	79.3	163	88.3	93	76.0
	35-39	597	34.8	436	41.9	65	21.0	63	25.9	33	26.8
	40-49	100	2.4	72	2.9	9	1.2	14	2.2	5	1.6

Source: Live Birth System, Centre for Health Information, 2006-2010

Table 2.5 Sets of Twins³, Province and Regional Health Authorities

Year	Province	Eastern	Central	Western	Labrador-Grenfell
2006	65	44	7	6	8
2007	64	51	7	---	---
2008	80	51	---	15	---
2009	79	59	11	---	---
2010	80	54	12	---	---

Source: Live Birth System, Centre for Health Information, 2006-2010

¹ Per 1,000 women in respective age group

² Includes live births to females 19 years of age and under per 1,000 females aged 15 to 19.

³ Includes sets of twins in which one birth was a stillbirth

--- Data suppressed where cell count less than 5 or due to privacy policies.

Table 2.6 Number and Percentage of Pre-Term¹ Live Births, Province and Regional Health Authorities

Year	Province		Eastern		Central		Western		Labrador-Grenfell	
	No.	%	No.	%	No.	%	No.	%	No.	%
2006	405	8.9	275	9.8	56	7.8	39	6.7	35	8.6
2007	370	8.1	252	9.1	57	7.4	36	6.0	25	6.1
2008	433	8.9	286	9.6	57	7.5	56	8.4	34	7.6
2009	404	8.2	253	8.3	62	8.1	47	7.3	42	9.9
2010	412	8.5	271	9.1	57	7.5	52	8.0	32	7.1

Source: Live Birth System, Centre for Health Information, 2006-2010

Table 2.7 Number and Percentage of Term² Live Births, Province and Regional Health Authorities

Year	Province		Eastern		Central		Western		Labrador-Grenfell	
	No.	%	No.	%	No.	%	No.	%	No.	%
2006	4097	90.5	2530	89.9	659	91.3	538	92.4	370	90.5
2007	4161	91.5	2515	90.7	707	91.9	559	93.5	380	93.4
2008	4415	90.8	2693	90.1	701	92.4	612	91.3	409	91.9
2009	4467	91.2	2798	91.3	701	91.2	585	91.4	383	89.9
2010	4421	91.1	2712	90.6	698	92.1	598	91.6	413	92.2

Source: Live Birth System, Centre for Health Information, 2006-2010

Table 2.8 Number and Percentage of Post-Term³ Live Births, Province and Regional Health Authorities

Year	Province		Eastern		Central		Western		Labrador-Grenfell	
	No.	%	No.	%	No.	%	No.	%	No.	%
2006	25	0.6	---	---	7	1.0	---	---	---	---
2007	15	0.3	5	0.2	---	---	---	---	---	---
2008	14	0.3	---	---	---	---	---	---	---	---
2009	27	0.6	---	---	---	---	8	1.3	---	---
2009	18	0.4	9	0.3	---	---	---	---	---	---

Source: Live Birth System, Centre for Health Information, 2006-2010

¹ Pre-Term: Less than 37 completed weeks gestation

² Term: 37 to 41 completed weeks gestation

³ Post-Term: Greater than 41 completed weeks gestation

--- Data suppressed where cell count less than 5 or due to privacy policies.

Notes: a. Sum of live births (pre-term, term and post term) may not equal total live births for the Province and regional health authorities due to missing gestational age for some births.

b. Sum of percentages for pre-term, term and post term live births may not equal 100% due to rounding.

Table 2.9 Number and Percentage of Live Births of Low¹ Birth Weight, Province and Regional Health Authorities

Year	Province		Eastern		Central		Western		Labrador-Grenfell	
	No.	%	No.	%	No.	%	No.	%	No.	%
2006	254	5.6	176	6.3	30	4.2	30	5.2	18	4.4
2007	246	5.4	172	6.2	37	4.8	18	3.0	19	4.7
2008	292	6.0	181	6.1	41	5.4	44	6.6	26	5.9
2009	268	5.5	183	6.0	33	4.3	30	4.7	22	5.2
2010	302	6.2	190	6.4	42	5.5	45	6.9	25	5.6

Source: Live Birth System, Centre for Health Information, 2006-2010

Table 2.10 Number and Percentage of Live Births with Normal² Birth Weight, Province and Regional Health Authorities

Year	Province		Eastern		Central		Western		Labrador-Grenfell	
	No.	%	No.	%	No.	%	No.	%	No.	%
2006	4138	91.4	2558	90.8	667	92.4	538	92.4	375	91.9
2007	4156	91.4	2514	90.7	706	91.8	566	94.6	370	90.9
2008	4419	90.9	2716	90.9	691	91.0	606	90.4	406	91.4
2009	4496	91.8	2793	91.2	723	94.0	593	92.7	387	90.8
2010	4422	91.1	2730	91.2	694	91.4	594	91.0	404	90.2

Source: Live Birth System, Centre for Health Information, 2006-2010

Table 2.11 Number and Percentage of Live Births with High³ Birth Weight, Province and Regional Health Authorities

Year	Province		Eastern		Central		Western		Labrador-Grenfell	
	No.	%	No.	%	No.	%	No.	%	No.	%
2006	136	3.0	82	2.9	25	3.5	14	2.4	15	3.7
2007	144	3.2	86	3.1	26	3.4	14	2.3	18	4.4
2008	150	3.1	91	3.0	27	3.6	20	3.0	12	2.7
2009	133	2.7	86	2.8	13	1.7	17	2.7	17	4.0
2010	128	2.6	72	2.4	23	3.0	14	2.1	19	4.2

Source: Live Birth System, Centre for Health Information, 2006-2010

¹ Birth weight less than 2500 grams

² Birth weight 2500-4499 grams

³ Birth weight 4500 grams or more

Notes: a. Sum of live births (low, normal and high birth weight) may not equal total live births for the Province and regional health authorities due to missing birth weight for some births.

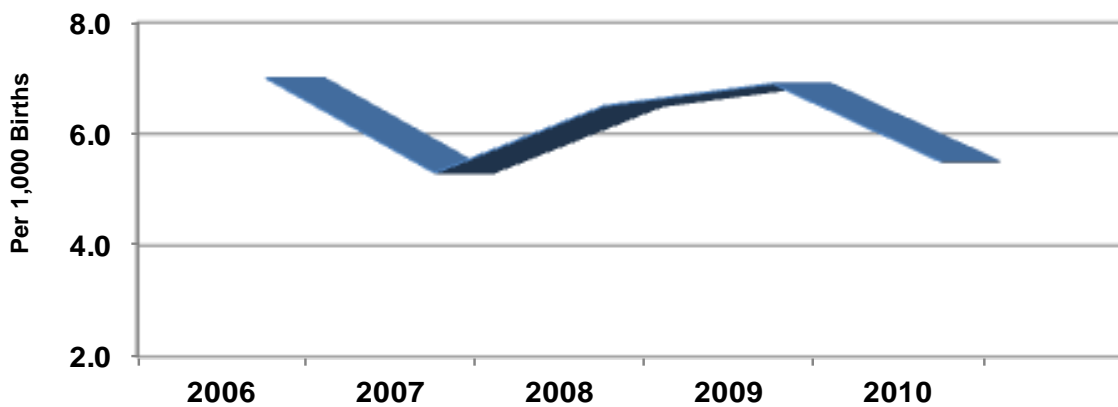
b. Sum of percentages for low, normal and high birth weight may not equal 100% due to rounding.

Table 2.12 Number and Rate¹ of Stillbirths, Province

Year	Province	
	No.	Rate
2006	32	7.0
2007	24	5.3
2008	32	6.5
2009	34	6.9
2010	27	5.5

Source: Stillbirth System, Centre for Health Information, 2006-2010; Live Birth System, Centre for Health Information, 2006-2010

Figure 2.5 Rate¹ of Stillbirths, Province



Source: Stillbirth System, Centre for Health Information, 2006-2010; Live Birth System, Centre for Health Information, 2006-2010

¹ Per 1,000 births (live births plus stillbirths)

Table 2.13 Number of Live Births to Out-of-Province Residents Occurring in Newfoundland and Labrador

<i>Year</i>	<i>Province</i>
	No.
2006	49
2007	31
2008	41
2009	37
2010	33

Source: Live Birth System, Centre for Health Information, 2006-2010

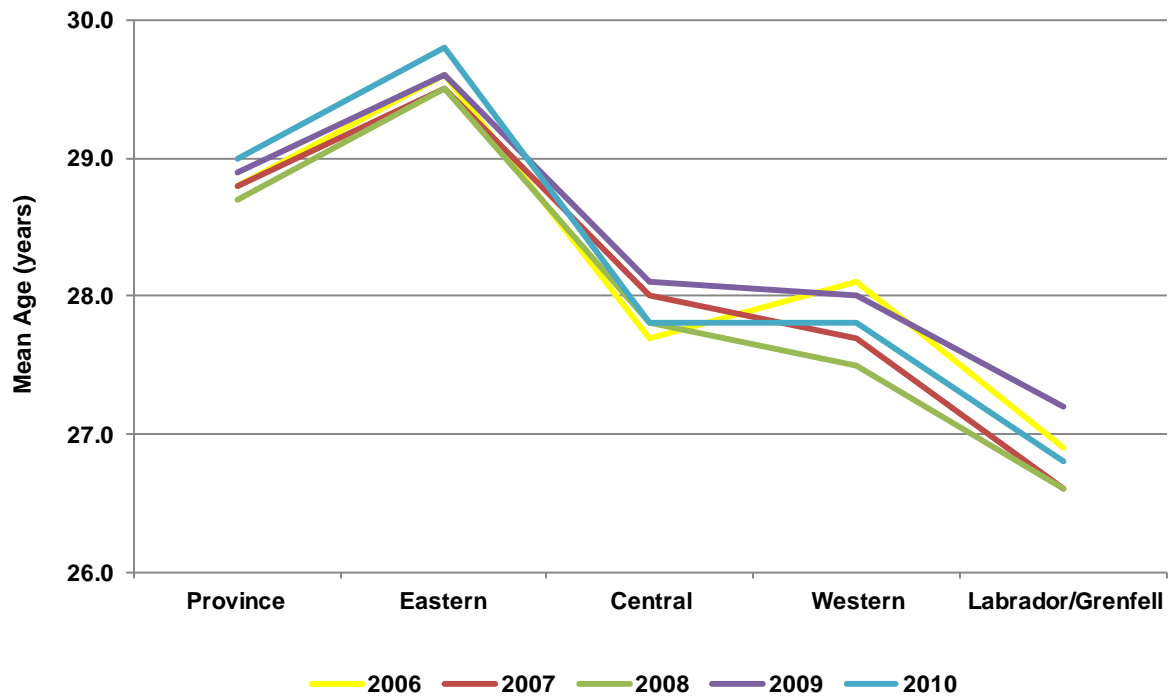
SECTION 3
LIVE BIRTH TRENDS BY AGE OF MOTHER
PROVINCE AND REGIONAL HEALTH AUTHORITIES
2006-2010

Table 3.1 Mean Age of Mother (years), Province and Regional Health Authorities

Year	Province	Eastern	Central	Western	Labrador-Grenfell
2006	28.8	29.6	27.7	28.1	26.9
2007	28.8	29.5	28.0	27.7	26.6
2008	28.7	29.5	27.8	27.5	26.6
2009	28.9	29.6	28.1	28.0	27.2
2010	29.0	29.8	27.8	27.8	26.8

Source: Live Birth System, Centre for Health Information, 2006-2010

Figure 3.1 Mean Age of Mother, Province and Regional Health Authorities



Source: Live Birth System, Centre for Health Information, 2006-2010

Table 3.2 Number and Percentage¹ of Live Births to First-Time² Mothers by Age Group, Province and Regional Health Authorities

Year	Age Group (Years)	Province		Eastern		Central		Western		Labrador-Grenfell	
		No.	%	No.	%	No.	%	No.	%	No.	%
2006	< 15	---	---	---	---	0	0	0	0	0	0
	15-19	242	88.6	109	90.8	41	77.4	49	90.7	43	93.5
	20-24	563	61.1	328	66.3	98	53.0	67	52.8	70	60.9
	25-29	659	48.3	428	52.5	123	47.3	61	38.1	47	36.7
	30-34	463	34.9	349	37.9	37	25.2	54	31.6	23	27.1
	35-39	167	28.9	125	30.0	20	30.3	16	24.6	6	19.4
	40-49	23	33.8	19	39.6	---	---	---	---	0	0
2007	<15	---	---	0	0	0	0	0	0	---	---
	15-19	240	88.6	117	92.1	34	79.1	40	85.1	49	90.7
	20-24	558	61.9	302	66.1	106	54.9	86	61.0	64	57.7
	25-29	650	47.0	400	49.8	99	40.2	104	48.8	47	39.5
	30-34	504	37.0	369	39.5	62	30.4	46	32.9	27	32.1
	35-39	158	28.6	118	29.6	14	19.2	14	28.0	12	37.5
	40-49	17	23.0	13	24.5	---	---	---	---	0	0
2008	< 15	---	---	---	---	---	---	---	---	0	0
	15-19	260	86.7	120	90.9	50	90.9	51	83.6	39	75.0
	20-24	637	62.7	366	69.8	111	59.7	101	55.5	59	47.6
	25-29	729	51.1	471	56.5	107	42.3	86	45.3	65	43.3
	30-34	536	37.2	406	40.0	54	30.2	51	32.3	25	28.1
	35-39	159	26.8	113	26.5	19	25.7	23	34.3	---	---
	40-49	19	22.6	11	19.0	---	---	5	45.5	---	---
2009	< 15	---	---	---	---	---	---	0	0	0	0
	15-19	260	87.8	120	87.0	52	89.7	48	94.1	40	81.6
	20-24	583	63.9	330	68.5	102	61.8	89	55.6	62	58.5
	25-29	743	49.8	501	54.2	108	43.0	77	41.8	57	42.9
	30-34	570	37.9	421	40.8	61	29.6	65	37.8	23	24.2
	35-39	164	27.0	118	28.0	13	16.5	20	29.9	13	31.7
	40-49	23	27.4	17	25.4	---	---	---	---	---	---

Source: Live Birth Notification System, Centre for Health Information, 2006-2010

¹ Percentage of total live births in respective age groups

² Present delivery was first live birth

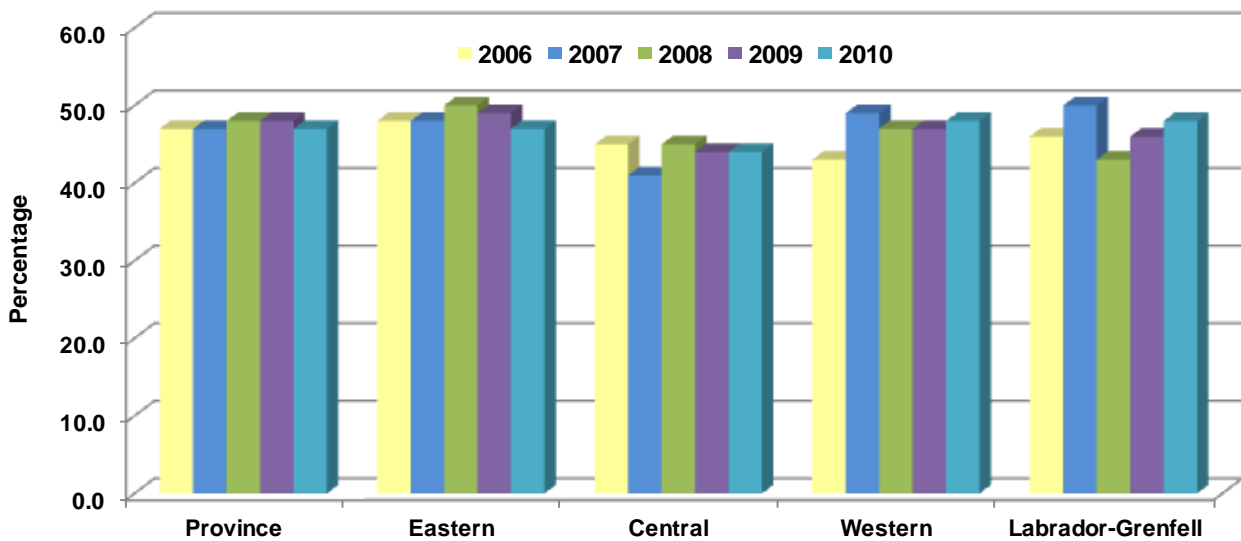
--- Data suppressed where cell count less than 5 or due to privacy policies.

Table 3.2 Number and Percentage¹ of Live Births to First-Time² Mothers by Age Group, Province and Regional Health Authorities – Continued

Year	Age Group (Years)	Province		Eastern		Central		Western		Labrador-Grenfell	
		No.	%	No.	%	No.	%	No.	%	No.	%
2010	< 15	---	---	0	0	0	0	---	---	0	0
	15-19	277	85.8	117	86.0	52	89.7	57	87.7	51	79.7
	20-24	539	59.6	289	63.7	97	52.2	94	60.3	59	54.6
	25-29	737	50.1	483	54.6	104	41.6	87	45.5	63	43.4
	30-34	519	35.5	378	37.3	60	31.4	51	31.3	30	32.3
	35-39	173	29.0	130	29.8	18	27.7	17	27.0	8	57.1
	40-49	33	33.0	20	27.8	---	---	8	57.1	---	---

Source: Live Birth System, Centre for Health Information, 2006-2010

Figure 3.2 Percentage of Live Births to First-Time² Mothers, Province and Regional Health Authorities



Source: Live Birth System, Centre for Health Information, 2006-2010

¹ Percentage of total live births in respective age group

² Present delivery was first live birth

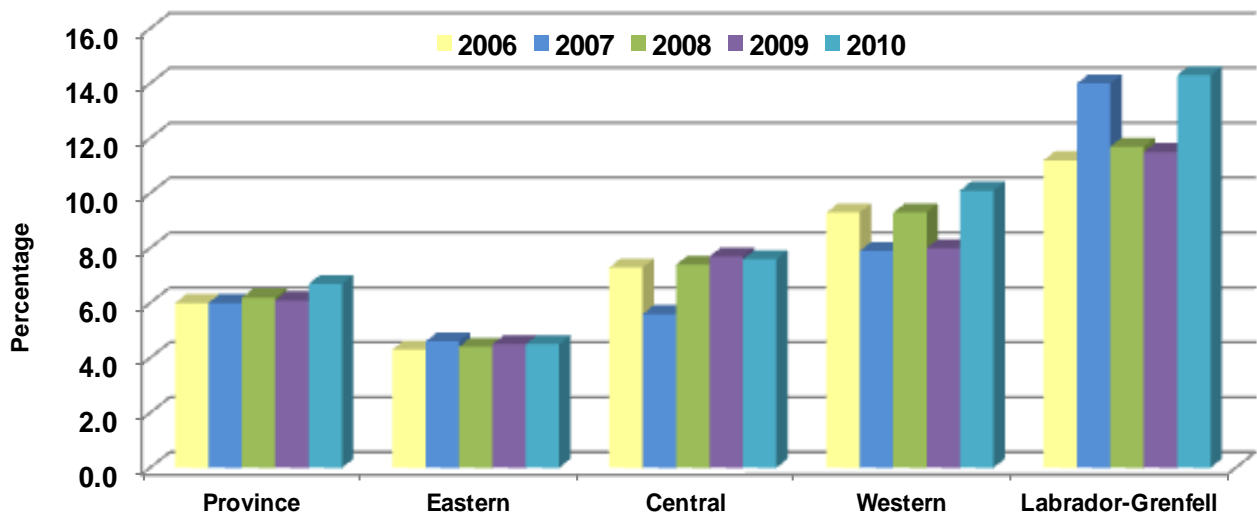
--- Data suppressed where cell count less than 5 or due to privacy policies.

Table 3.3 Number and Percentage of Live Births to Teen¹ Mothers, Province and Regional Health Authorities

Year	Province		Eastern		Central		Western		Labrador-Grenfell	
	No.	%	No.	%	No.	%	No.	%	No.	%
2006	274	6.0	121	4.3	53	7.3	54	9.3	46	11.2
2007	274	6.0	127	4.6	43	5.6	47	7.9	57	14.0
2008	303	6.2	133	4.4	56	7.4	62	9.3	52	11.7
2009	298	6.1	139	4.5	59	7.7	51	8.0	49	11.5
2010	324	6.7	136	4.5	58	7.6	66	10.1	64	14.3

Source: Live Birth System, Centre for Health Information, 2006-2010

Figure 3.3 Percentage of Live Births to Teen¹ Mothers, Province and Regional Health Authorities



Source: Live Birth System, Centre for Health Information, 2006-2010

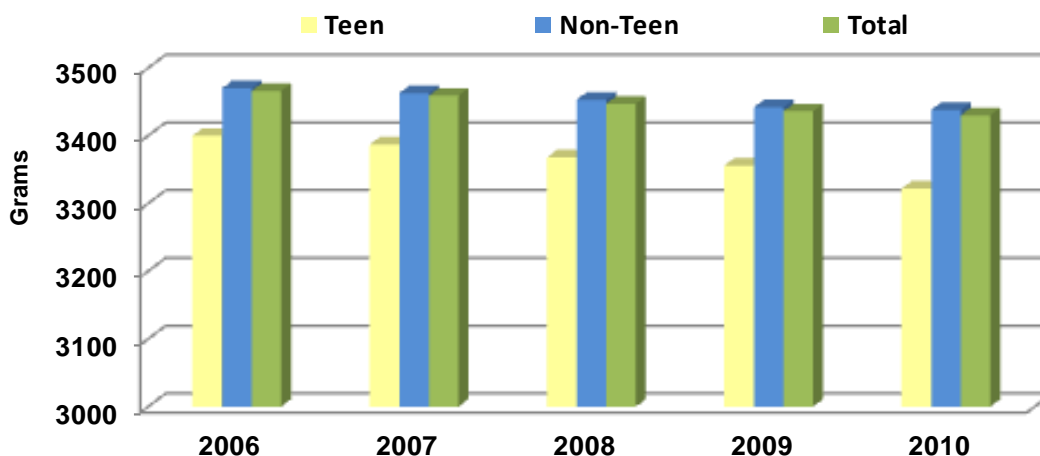
¹ Includes live births to females 19 years of age and under

Table 3.4 Mean Weight¹ of Live Births to Teen² Mothers and Non-Teen Mothers, Province and Regional Health Authorities

Year		Province	Eastern	Central	Western	Labrador-Grenfell
2006	Teen	3400	3309	3494	3398	3535
	Non-Teen	3470	3451	3511	3509	3481
	All Live Births	3466	3445	3510	3499	3487
2007	Teen	3387	3340	3413	3446	3423
	Non-Teen	3463	3438	3472	3491	3589
	All Live Births	3459	3434	3469	3488	3566
2008	Teen	3368	3398	3331	3282	3432
	Non-Teen	3453	3451	3466	3426	3481
	All Live Births	3447	3449	3456	3412	3475
2009	Teen	3356	3309	3407	3356	3426
	Non-Teen	3442	3433	3452	3463	3460
	All Live Births	3436	3427	3449	3454	3456
2010	Teen	3322	3268	3350	3351	3378
	Non-Teen	3438	3430	3440	3417	3528
	All Live Births	3430	3423	3433	3410	3507

Source: Live Birth System, Centre for Health Information, 2006-2010

Figure 3.4 Mean Weight¹ of Live Births to Teen² Mothers and Non-Teen Mothers, Province



Source: Live Birth System, Centre for Health Information, 2006-2010

¹In grams

² Includes live births to females 19 years of age and under

Glossary

Crude Birth Rate: number of live births per 1,000 population.

Age-Specific Fertility Rate: number of live births per 1,000 women in a specific age interval.

Caesarean Section: a form of childbirth in which a surgical incision is made through a mother's abdomen and uterus to deliver one or more babies.

Birth Weight

- **Low Birth Weight:** birth weight under 2,500 grams.
- **Normal Birth Weight:** birth weight from 2,500 grams to 4,499 grams.
- **High Birth Weight:** birth weight of 4,500 grams or more.

Gestation Period: age of infant in completed weeks based on ultrasound if available, otherwise, based on last menstrual period.

- **Pre-term birth:** period of gestation less than 37 completed weeks.
- **Term birth:** period of gestation from 37 to 41 completed weeks.
- **Post-term birth:** period of gestation greater than 41 completed weeks.

Live Birth: the complete expulsion or extraction from its mother of a product of conception, irrespective of the duration of pregnancy, which, after separation, breathes or shows any other evidence of life, such as beating of the heart, pulsation of the umbilical cord, or definite movement of voluntary muscles, whether or not the umbilical cord has been cut or the placenta is attached.

Natural Increase: total live births in a population minus the total deaths in the same population.

Stillbirth (fetal death): death prior to the complete expulsion from its mother of a product of conception, irrespective of the duration of the pregnancy; the death is indicated by the fact that after such separation the fetus does not breathe or show any other evidence of life, such as beating of the heart, pulsation of the umbilical cord, or definite movement of voluntary muscles. Only fetal deaths where the production of conception has a birth weight of 500 grams or more or the duration of pregnancy is 20 weeks or longer are registered in Canada. However, in Quebec and Saskatchewan (prior to 2001) and New Brunswick (prior to 1996), only fetal deaths (stillbirths) weighing 500 grams or more must be reported, regardless of the gestation period. Until 1997, a gestation period of at least 20 weeks was required in Prince Edward Island, regardless of birth weight.

Appendix

Crude Birth Rate =	$\frac{\text{total number of live births}}{\text{total population}}$	X 1000
Percentage of Live Births = By Caesarean Section Delivery	$\frac{\text{total numbers of live birthsdelivered by caesarean section}}{\text{total number of live births}}$	X 1000
Rate of Natural Increase =	$\frac{\text{total number of live births-deaths}}{\text{total population}}$	X 1000
Age-Specific Fertility Rate =	$\frac{\text{number of live births to mother'sin a specific age group}}{\text{total female population inthat age group}}$	X 1000
Percentage of Pre-term = Live Births	$\frac{\text{total number of live births with gestationless than 37 completed weeks}}{\text{total number of live births}}$	X 100
Percentage of Term = Live Births	$\frac{\text{total number of live births with gestationfrom 37 to 41 completed weeks}}{\text{total number of live births}}$	X 100
Percentage of Post-term = Live Births	$\frac{\text{total number of live births with gestationgreater than 41 completed weeks}}{\text{total number of live births}}$	X 100
Percentage of Live Births = of Low Birth Weight	$\frac{\text{total number of live births with a birthweight under 2,500 grams}}{\text{total number of live births}}$	X 100
Percentage of Live = Births of Normal Birth Weight	$\frac{\text{total number of live births with a birthweight from 2,500 grams to 4,499 grams}}{\text{total number of live births}}$	X 100
Percentage of Live Births = of High Birth Weight	$\frac{\text{total number of live births with a birthweight of 4,500 grams or more}}{\text{total number of live births}}$	X 100

Rate of Stillbirths =	$\frac{\text{total number of stillbirths}}{\text{total births (live births plus stillbirths)}}$	X 1000
Percentage of Live Births = to First-Time Mothers	$\frac{\text{total number of live births to first-time mothers}}{\text{total live births}}$	X 100
Percentage of Live Births = to First-Time Mothers (By Age Group)	$\frac{\text{total number of live births to first time mothers in specific age group}}{\text{total live births in respective age group}}$	X100
Percentage of Live Births = To Teen Mothers	$\frac{\text{total number of live births to females 19 years and under}}{\text{total live births}}$	X 100



70 O'Leary Avenue, St. John's, NL A1B 2C7
Telephone: 709-752-6000 • Facsimile: 709-752-6011

Registry Integrity Unit, 41 Conception Bay Highway
E. K. Jerrett & Associate Building, Bay Roberts, NL A0A 1G0
Telephone: 866-279-1198 • Facsimile: 709-786-5337

www.nlchi.nl.ca